

**Directory of
Archival and Manuscript Repositories
in the Delaware Valley**

Fourth Edition

Edited by Jack McCarthy

Delaware Valley Archivists Group

Philadelphia, Pennsylvania

2009

Copyright@2009
Delaware Valley Archivists Group
All rights reserved

First edition published in 1991 by the University of Pennsylvania Archives and Records Center. Copyright 1991 the Trustees of the University of Pennsylvania.

Second edition published in 1998 by the City of Philadelphia, Department of Records. Copyright 1998 by the City of Philadelphia.

Third edition published in 2003 by the Delaware Valley Archivists Group. Copyright 2003 by the Delaware Valley Archivists Group.

Cover photo caption and credit:

Photo from the *Evening Bulletin*, August 13, 1980. Courtesy of Temple University Libraries, Urban Archives.

Introduction

The Delaware Valley Archivists Group (DVAG) is pleased to present the 2009 edition of its Directory of Archival and Manuscript Repositories in the Delaware Valley. First published in 1991, with subsequent editions in 1998 and 2003, this fourth edition reveals a rich and varied community of 156 repositories in the greater Delaware Valley holding a wide range of archival and manuscript materials.

The DVAG coverage area is comprised of southeastern Pennsylvania, southern New Jersey, and all of the state of Delaware. In Pennsylvania this includes the counties of Philadelphia, Bucks, Chester, Delaware, and Montgomery; in Delaware the counties of Kent, New Castle, and Sussex; and in New Jersey the counties of Atlantic, Burlington, Camden, Cape May, Cumberland, Gloucester, Hunterdon, Mercer, Monmouth, Ocean, and Salem. In a few cases, repositories outside these counties chose to be included in the Directory, but no attempt was made at a comprehensive listing of repositories beyond the geographic region described above. Also, two repositories – the Pennsylvania State Archives in Harrisburg and the Newark Public Library in Newark, New Jersey – are listed because even though they are located well outside the coverage area, they include significant holdings documenting the coverage area.

A determined effort was made in this edition to seek out and include the many small “under the radar” repositories in the region that house archival and manuscript materials but may not be connected to the professional archival community. There are numerous such repositories throughout the Delaware Valley, often run by volunteers, that collectively hold a wealth of historical materials. While we were able to contact a good number of these smaller repositories, there were many that we could not and they remain unlisted. We hope that they will be included in future editions of the Directory so that we will have a still more accurate picture of the full range of archival and manuscript repositories in the region.

For the purposes of this Directory, a repository is defined as a physical place – a building or a space in a building – whose primary purpose is to house and make available archival and manuscript materials. Not included in the Directory, therefore, are the countless collections of archival and manuscript materials held by businesses, organizations,

families, and individuals in the region, unless those entities have a designated place for the materials and a program for making them available to researchers. In other words, this is a directory of *repositories* – not *collections* – of archival and manuscript materials in the Delaware Valley.

We hope this Directory proves useful to the members of the Delaware Valley Archivists Group, to the many repositories in the region, and to those who use their collections.

Jack McCarthy, Editor
Archival Consultant

Donald F. Cornelius
New Jersey Division of Archives & Records Management
Jaime Margalotti
University of Delaware Library Special Collections
Adrienne Pruitt
Barnes Foundation
Robert Sieczkiewicz
Drexel University Archives

Acknowledgements

Thanks to the many representatives of repositories throughout the region who took the time to provide information for this Directory. Their cooperation helped produce a particularly detailed and comprehensive listing of repositories in the area.

This Directory would not have been possible without the hard work of a core group of dedicated individuals who put in many hours on the project. The DVAG Directory Committee included Donald F. Cornelius of the New Jersey Division of Archives & Records Management, Jaime Margalotti of the University of Delaware Library Special Collections, Adrienne Pruitt of the Barnes Foundation, and Robert Sieczkiewicz of the Drexel University Archives. Those who use this Directory are indebted to them for their commitment to accuracy and thoroughness as well as their dogged determination in tracking down repositories far and wide. I in particular am indebted to them for being so easy to work with and dedicated to the project.

Thanks are also due to the officers and members of the DVAG Planning Committee, past and present, who take time out of their busy schedules to manage the organization that publishes this Directory. There is an active archival community in the Delaware Valley whose cooperative spirit and commitment to the archival profession are admirable. It is the DVAG Planning Committee that brings these individuals and organizations together and makes the Delaware Valley region a particularly rich one for those of us who have the good fortune to work with archives and manuscripts.

Jack McCarthy
Editor

The Delaware Valley Archivists Group

The Delaware Valley Archivists Group was established in 1980 to provide area archivists the opportunity to talk and visit archives of all sizes throughout the region. Since its inception, DVAG has sought to:

- Promote the preservation of historic documents;
- Provide a forum where professional issues can be discussed and where colleagues can meet;
- Promote professional growth through continuing education; and
- Educate the general public about the administrative, legal, fiscal, historical and cultural value of public and private archives and manuscript collections.

DVAG holds quarterly meetings and offers periodic workshops for members at all levels of ability. Meetings take place in a variety of locations throughout the Delaware Valley region, ranging from the area's largest archives to one- and two-person departments.

For more information, visit the DVAG website at www.dvarchivists.org.

Alphabetical List of Repositories

Academy of Natural Sciences
Academy of the New Church Archive
ACE Archives
African American Museum in Philadelphia
American College of Physicians Archives
American Friends Service Committee
American Philosophical Society
American Swedish Historical Museum
Athenaeum of Philadelphia
Atlantic County Historical Society
Atwater Kent Museum of Philadelphia
Barnes Foundation Archives
Bethlehem Area Public Library
Brandywine River Museum
Bridesburg Historical Society
Bryn Mawr College
Bucks County Historical Society, Spruance Library
Burlington County Historical Society
Cabrini College
Camden County Historical Society
Cape May County Historical and Genealogical Society
Chadds Ford Historical Society - Roland Disney Library
Charlestown Historical Society
Chemical Heritage Foundation
Chester County Archives and Records Services
Chester County Historical Society
Chestnut Hill Historical Society
Cheyney University Archives
College of Physicians of Philadelphia
Concord Township Historical Society
Cooper University Hospital Archives
Corbit Calloway Memorial Library - Delmarva Collection
Cumberland County Historical Society
Curtis Institute of Music
David Library of the American Revolution
David Sarnoff Library
Delaware Art Museum, Helen Farr Sloan Library & Archives

Delaware County Archives
Delaware County Historical Society
Delaware Historical Society
Delaware Public Archives
Drexel University Archives and Special Collections
Drexel University College of Medicine Archives & Special Collections
Educational Testing Service
Fairmount Park Historic Resource Archive
Felician College Archives
Free Library of Philadelphia – Print and Picture Collection
Friends Historical Library at Swarthmore College
German Society of Pennsylvania
Germantown Historical Society
Girard College History Collection
Gloucester County Historical Society
Grand Army of the Republic Civil War Museum and Library
Griffith Morgan House
Gwynedd-Mercy College
Haddonfield Public Library
Hagley Museum and Library
Haverford College
Henry Francis du Pont Winterthur Museum
Historic St. George's United Methodist Church
Historic Yellow Springs
Historical Society of Bensalem Township
Historical Society of Fort Washington
Historical Society of Frankford
Historical Society of Montgomery County
Historical Society of Moorestown
Historical Society of Pennsylvania
Historical Society of Phoenixville Area
Historical Society of Princeton
Historical Society of Tacony
Holy Family University Archives
Hunterdon County Historical Society
Independence National Historical Park Library & Archives
Independence Seaport Museum
Institute for Advanced Study Archives
James A. Michener Art Museum
Lafayette College

Lansdale Historical Society
LaSalle University - Archives
LaSalle University - Brothers of the Christian Schools, Baltimore
Province
LaSalle University - Special Collections
Library Company of Philadelphia
Lower Merion Historical Society
Margaret R. Grundy Memorial Museum
Mennonite History Library & Archives
Monmouth County Archives
Montgomery Township Historical Society
Moravian Archives
Moravian College and Moravian Theological Seminary
Moravian Historical Society
National Archives and Records Administration - Mid Atlantic Region
Neumann College
New Jersey State Archives
New Jersey State Library
Newark Public Library, Special Collections Division
Northampton County Historical & Genealogical Society
Ocean County Historical Society
Old Barracks Museum
Old York Road Historical Society
Peirce College
Pennsylvania Academy of the Fine Arts
Pennsylvania Horticultural Society
Pennsylvania Hospital Archives
Pennsylvania State Archives
Philadelphia Archdiocesan Historical Research Center
Philadelphia City Archives
Philadelphia Contributionship
Philadelphia Jewish Archives Center
Philadelphia Museum of Art
Philadelphia Water Department Archives
Please Touch Museum
Pottstown Historical Society
Presbyterian Historical Society
Princeton Theological Seminary, Special Collections
Princeton University Archives, Seeley G. Mudd Manuscript Library
Radnor Historical Society

Rosemont College
Rosenbach Museum and Library
Rutgers University Libraries, Special Collections and University Archives
Saint Joseph's University Archives and Special Collections
Salem County Historical Society
Sisters of St. Francis of Philadelphia Archives
Sisters of the Blessed Sacrament
Society of the Holy Child Jesus - American Province Archives
Soroptimist International of the Americas
St. Vincent's Seminary - Ducournau Archives of the Eastern Province of the Congregation of the Mission
Swarthmore College Peace Collection
Temple University - Charles L. Blockson Afro-American Collection
Temple University - Urban Archives
Temple University – Special Collections
Thomas Jefferson University
Trenton Public Library
Union League of Philadelphia
University of Delaware Library - Special Collections
University of Delaware - University Archives and Records Management
University of Pennsylvania - Architectural Archives
University of Pennsylvania - Library at the Herbert D. Katz Center for Advanced Judaic Studies
University of Pennsylvania - Morris Arboretum Library
University of Pennsylvania - University Archives and Records Center
University of Pennsylvania Museum Archives
University of Pennsylvania School of Nursing - Barbara Bates Center for the Study of the History of Nursing
University of Pennsylvania, Rare Book & Manuscript Library
University of Pennsylvania Law School - Biddle Law Library Archives
University of the Arts
University of the Sciences in Philadelphia
Ursinus College
Villanova University
Wagner Free Institute of Science
West Chester University School of Music Archives
West Chester University Special Collections
Westminster Theological Seminary
Westtown School

Widener University

William Way Community Center - Gay, Lesbian, Bisexual, Transgender

Library/Archives of Philadelphia

Wistar Archives

Repository Information

Academy of Natural Sciences

1900 Benjamin Franklin Parkway

Philadelphia, PA 19103-1195

Repository established: 1960

Access:

Contact person: Archivist

Telephone: 215-299-1040

Fax: 215-299-1144

E-mail: archives@ansp.org

Web: www.ansp.org/library

Days and hours of operation: Monday-Friday 1:00-5:00

Appointment necessary? Required

Holdings:

Total volume: 1,400 linear feet

Inclusive dates: 1681 – present

Predominant dates: 1870 – present

Scope and content of holdings/collections: Materials pertaining to the work of the Academy, its members and staff, prominent 19th- and 20th-century natural scientists and organizations closely associated with the Academy since its founding in 1812. Included are records of the administration, scientific departments and museum; field notes, diaries and journals of individuals; film and photograph collections related to the activities of the Academy and staff; and collections of 19th- and 20th-century natural history illustrations.

Academy of the New Church Archive

PO Box 740

Bryn Athyn, PA 19009-0740

Repository established: 1877

Access:

Contact person: Gregory A. Jackson, Archivist

Telephone: 267-502-2421

Fax: 267-502-2637

E-mail: gregory.jackson@brynathyn.edu

Days and hours of operation: Monday-Friday 8:00-4:00

Appointment necessary? Required

Holdings:

Total volume: 3,200 cubic feet

Inclusive dates: 1845 – 2008

Predominant dates: 1870 – 2000

Scope and content of holdings/collections: The Academy of the New Church Archive is divided between two repositories. In the Swedenborg Library collections, we maintain the organizational, professional and personal records and papers of institutions and people substantially involved in the founding, development and leadership of the General Church of the New Jerusalem, the Academy of the New Church, Bryn Athyn Church and Cathedral and other General Church Societies, Groups and Circles throughout the world, as well as closely associated organizations. We also collect ephemeral material generated by faculty and students concerning their activities and events. In the Glencairn Museum repository we hold the John & Gertrude Pitcairn Collection, Raymond & Mildred Pitcairn Collection and the Bryn Athyn Cathedral Collection. John Pitcairn, founder of Pittsburgh Plate Glass, was a founding member of the General Church and the Academy of the New Church. His children all became prominent in business or the arts. Raymond Pitcairn, oldest son of John was the driving force behind the construction of Bryn Athyn

Cathedral as well as being prominent and active in politics, business, and the arts. The Bryn Athyn Cathedral Collections documents the construction of the Bryn Athyn Cathedral.

ACE Archives

436 Walnut Street – WA01C

Philadelphia, PA 19106

Repository established: 1881

Access:

Contact person: Corporate Archivist

Telephone: 215-640-4918

Fax: 215-640-5735

E-mail: Joan.Lowe@ace-ina.com

Days and hours of operation: Monday-Friday 9:00-4:00

Appointment necessary? Required

Holdings:

Total volume: Approximately 2,500 feet

Inclusive dates: 1792 – present

Predominant dates: 19th century – present

Scope and content of holdings/collections: The ACE Archives contain the private business records of ACE Limited, its subsidiaries and predecessors. Predecessor records include those of the Insurance Company of North America. INA was founded in 1792 and is one of the country's oldest fire and marine insurers. Due to the nature of its holdings, permission for use of the ACE Archives is at the discretion of the corporation. Please contact the Corporate Archivist prior to visiting.

African American Museum in Philadelphia

701 Arch Street

Philadelphia, PA 19106

Repository established: 1976

Access:

Contact person: Curator of Collections

Telephone: 215-574-0380 x223

Fax: 215-574-3110

E-mail: lguy@aampmuseum.org

Web: www.aampmuseum.org

Days and hours of operation: Tuesday-Friday 10:00-5:00

Appointment necessary? Required

Holdings:

Total volume: 135+ linear feet

Inclusive dates: 1800s – present

Predominant dates: Late 19th – late 20th century

Scope and content of holdings/collections: The collection contains over 135 linear feet of documents, books, photographs, and manuscripts. The collection documents regional African American political, economic, and socio-cultural history from the late 19th to the late 20th century. Holdings include the Jack Franklin Photographic Collection; Lloyd Thompson/William Cash Collection (Negro League Baseball); the Dr. Ruth Hayre Collection; and the Joyce M. Brown Collection (Philadanco).

American College of Physicians Archives

2nd Floor

190 North Independence Mall West

Philadelphia, PA 19106

Repository established: 1915

Access:

Telephone: 215-351-2475

Fax: 215-351-2444

E-mail: archives@acponline.org

Web: www.acponline.org/archives

Days and hours of operation: Monday-Friday 8:30-4:30

Appointment necessary? Required

Holdings:

Total volume: 3,000 linear feet

Inclusive dates: 1915 – present

Predominant dates: 1980 – present

Scope and content of holdings/collections: The American College of Physicians Archives collects, preserves, and provides access to the historical records of the College, from its founding in 1915 until today. As an institutional archives, the mission of the archives is to collect and preserve material that documents the history of the College. Holdings consist primarily of institutional publications and products, governance records, and photographs of people and events from 1915 to the present. Primary users are the members, leadership, and staff of the College. However, collections are open to researchers interested in the history of the ACP or of internal medicine. An appointment is required as many record series are not open to external researchers.

American Friends Service Committee

Archives

1501 Cherry Street

Philadelphia, PA 19102

Repository established: 1917

Access:

Contact person: Archivist

Telephone: 215-241-7044

Fax: 215-241-7047

E-mail: archives@afsc.org

Web: <http://www.afsc.org/ht/d/sp/i/461/pid/461>

Days and hours of operation: Monday-Friday 10:00-5:00

Appointment necessary? Required

Holdings:

Total volume: 3,000 linear feet

Inclusive dates: 1917 – present

Scope and content of holdings/collections: Papers and other memorabilia pertaining to the work of the AFSC. The one exception is the papers of Clarence Pickett, third executive secretary. Papers document the work of the AFSC among pre- and post-World War II refugees, Japanese-American relocation, work among miners in West Virginia and Kentucky during the Depression, war relief and child feeding during and following World War I and civil rights in the 1960s. Also included is a large collection of records relating to anti-Vietnam War activities and work in Indo-China during the war. More recent materials pertain to peace and justice programs in the United States and development projects abroad.

American Philosophical Society

105 South Fifth Street

Philadelphia, PA 19106-3386

Repository established: 1743

Access:

Contact person: Manuscripts Librarian or Head of Manuscripts Processing

Telephone: 215-440-3404

Fax: 215-440-3423

E-mail: manuscripts@amphilsoc.org

Web: www.amphilsoc.org

Days and hours of operation: Monday-Friday 9:00-4:45

Appointment necessary? Required

Holdings:

Total volume: 10,000 linear feet

Inclusive dates: 1580s – present

Predominant dates: 1770s – 1980s

Scope and content of holdings/collections: Manuscripts pertaining primarily to the history of science in America: 18th- and 19th-century manuscripts which consist primarily of correspondence related to science in general, including botany, entomology, geology, natural history, electricity, evolution and medicine; 20th-century documents which include correspondence, diaries, laboratory notes, research reports, tape recordings and photographs concerning genetics, quantum physics, the development of the computer, and medicine; also archives of the Society itself and several scientific societies, as well as collections of manuscripts documenting the history, customs, and languages of primarily Native Americans and the history anthropology. There are also significant collections in eugenics, technology, historiography, statistics, exploration of the West and the Arctic, and the history of Pennsylvania and Philadelphia.

American Swedish Historical Museum

1900 Pattison Avenue

Philadelphia, PA 19145

Repository established: 1926

Access:

Contact person: Curator

Telephone: 215-389-1776

Fax: 215-389-7701

E-mail: info@americanswedish.org

Web: www.americanswedish.org

Days and hours of operation: Tuesday-Friday 10:00-4:00

Appointment necessary? Required

Holdings:

Total volume: Approximately 500 linear feet

Inclusive dates: 1500 – present

Predominant dates: 1800 – present

Scope and content of holdings/collections: Swedish and Swedish-American history and culture along with special collections relating to the 17th-century New Sweden Colony, 19th-century Swedish immigration to the United States, John Ericsson, Jenny Lind, and Fredrika Bremer.

Athenaeum of Philadelphia

219 South Sixth Street

Philadelphia, PA 19106

Repository established: 1880s

Access:

Contact person: Curator of Architecture

Telephone: 215-925-2688

Fax: 215-925-3755

E-mail: lavery@PhilaAthenaeum.org

Web: www.PhilaAthenaeum.org; www.philadelphiabuildings.org;
www.philageohistory.org

Days and hours of operation: Monday-Friday 9:00-5:00, first Saturday of each month 10:00-2:00

Appointment necessary? Required

Holdings:

Total volume: 50,000 volumes; 220,000 architectural drawings; 350,000 photographs

Inclusive dates: 1700 – present

Predominant dates: 1850 – 1950

Scope and content of holdings/collections: The Athenaeum of Philadelphia is the principal repository for the records of the achievement of Philadelphia architects prior to 1950, with 220,000 architectural drawings, 350,000+ photographs, and extensive manuscript holdings representing the work of approximately 2,500 American architects. Major holdings include documents of architects Thomas Ustick Walter, Frank Furness, William L. & Walter F. Price, Horace Trumbauer, Paul P. Cret, Louis Magaziner, and John M. Dickey. The institution now focuses particularly on the history of American architecture and building technology, a topic with roots reaching deeply into the Athenaeum's history.

Atlantic County Historical Society

The Atlantic Heritage Center

907 Shore Road, PO Box 301

Somers Point, NJ 08244

Repository established: 1913

Access:

Contact person: Dale Lonkart, Librarian

Telephone: 609-927-5218

E-mail: AHCINFO@comcast.net

Web: <http://www.AtlanticHeritageCenterNJ.org>

Days and hours of operation: Wednesday-Saturday 10:00-3:30

Appointment necessary? Not required

Holdings:

Total volume: 8,000 volumes, etc.

Scope and content of holdings/collections: Books include genealogies; American history, town, county & state histories; cemetery, church, marriage and death records; periodicals; biographies; city directories; and local school yearbooks. The collections also include Atlantic County family documents and genealogies; maps; photos; Bibles; ephemera; account books; diaries; microfilm of census records; and local newspapers.

Atwater Kent Museum of Philadelphia

15 South 7th Street

Philadelphia, PA 19106

Repository established: 1938

Access:

Contact person: Susan Drinan, Registrar

Telephone: 215-685-4839

Fax: 215-843-1713

E-mail: susan.drinan@atwaterkentmuseum.org

Web: www.philadelphiahistory.org

Days and hours of operation: Monday-Friday, 9:00-5:00

Appointment necessary? Required for research

Holdings:

Total volume: 110 linear feet of manuscripts, 8,000 printed works on paper, 1,000 lithograph folio advertisements, 2,000 drawings, 39,000 photographs, 750 pieces of sheet music, and 15,000 pieces of ephemera

Inclusive dates: 1682 – present

Predominant dates: 19th and 20th century

Scope and content of holdings/collections: During the past 70 years, the AKMP has amassed the Philadelphia City History Collection (PCHC), an assemblage of more than 100,000 items that is now the region's largest collection of Philadelphia-related artifacts. Recently, the

collection has been further enhanced through major additions from the Balch Institute for Ethnic Studies, the Insurance Company of North America – CIGNA, and the Art and Artifact Collection of the Historical Society of Pennsylvania. Spanning more than 300 years, the PCHC encompasses a broad expanse of the social, cultural, political and economic history of Philadelphia. A recent addition to the photographic collections is the work of Neil Benson including roughly 20,000 images. Neil Benson is a Philadelphia photographer who focused on political and social demonstrations and street life of the city from the late 1960s through the 1990s.

Barnes Foundation Archives and Library

300 North Latch's Lane

Merion, PA 19066

Repository established: 2001

Access:

Contact person: Katy Rawdon, Archivist and Librarian

Telephone: 610-667-0290 x1048

Fax: 610-664-4026

E-mail: archives@barnesfoundation.org

Web: www.barnesfoundation.org/archivesandlibrary.html

Days and hours of operation: Monday-Friday 9:30-4:30

Appointment necessary? Required

Holdings:

Total volume: Approximately 2,000 linear feet of archival material, approximately 2,500 rare books, auction and exhibition catalogues, and periodicals, and approximately 5,000 circulating library books.

Inclusive dates: 19th century – present

Predominant dates: 1922 – present

Scope and content of holdings/collections: The Barnes Foundation's archives comprise approximately 2,000 linear feet of records, which include the correspondence of Dr. Albert C. Barnes (1872 – 1951), drafts of writings and essays by Dr. Barnes and others, blueprints and drawings of Foundation buildings and the Arboretum, photographs, ephemera, Arboretum records, and institutional records documenting the activities of the Foundation through the present day.

Bethlehem Area Public Library

Bethlehem Room

11 W. Church Street

Bethlehem, PA 18018

Repository established: 1901

Access:

Contact person: Public Services Coordinator

Telephone: 610-691-3395

E-mail: info@bapl.org

Web: www.bapl.org

Days and hours of operation: Monday-Thursday 9:00-9:00, Friday 9:00-6:00, Saturday 9:00-5:00

Appointment necessary? Not required

Holdings:

Predominant dates: 1850 – 2002

Scope and content of holdings/collections: Materials relating to the history of the Lehigh Valley, especially the City of Bethlehem, Bethlehem Township, Hanover Township, Lower Saucon, Fountain Hill, Moravian History, Bethlehem Steel Corp., and its predecessor the Bethlehem Iron Co. "Selections from the Bethlehem Room," the online digital history site includes some local histories, plus WWI and WWII posters for the Emergency Fleet Corporation. Microfilm of the Bethlehem Globe-Times from 1867. Some online indexing and finding aids for archival collections and maps also available via the web site.

Brandywine River Museum

Library, Route 1 and Route 100

PO Box 141

Chadds Ford, PA 19317

Repository established: 1972

Access:

Contact person: Librarian or Collections Librarian

Telephone: 610-388-8361

E-mail: library@brandywine.org

Web: www.brandywine.org

Days and hours of operation: Monday-Thursday 10:00-3:00

Appointment necessary? Required

Holdings:

Total volume: Approximately 13,000 volumes, 170 linear feet

Inclusive dates: 1840s – present

Predominant dates: 1890 – 1920

Scope and content of holdings/collections: American art reference library, illustrated books of the Brandywine tradition, some manuscript materials.

Bridesburg Historical Society

2801 Brill Street

Philadelphia, PA, 19137

Repository established: 1989

Access:

Contact person: Teresa Pyott, President

Telephone: 215-535-3828

Days and hours of operation: By appointment

Appointment necessary? Required

Holdings:

Inclusive dates: Mid-19th century – present

Predominant dates: Early 20th century – present

Scope and content of holdings/collections: Materials relating to the history of the Bridesburg area of Philadelphia, including newspapers, photographs, deeds, maps, church histories, programs from local events, theses and articles on local history, and other materials

Bryn Mawr College

101 North Merion Avenue

Bryn Mawr, PA 19010-2899

Repository established: 1976

Access:

Contact person: Special Collections Librarian and College Archivist

Telephone: Archivist – 610-526-5285, Librarian – 610-526-5289

Fax: 610-526-7480

E-mail: SpecColl@brynmawr.edu

Web: www.brynmawr.edu/Library/SpecColl

Days and hours of operation: Monday-Friday 9:00-4:30

Appointment necessary? Not required

Holdings:

Total volume: 3,800 linear feet

Inclusive dates: Manuscripts 1000 AD – present, archives 1880 – present

Predominant dates: Manuscripts 1400 – present, archives 1894 – present

Scope and content of holdings/collections: The Manuscript Collection includes medieval and Renaissance humanist manuscripts, papers and letters of 19th- and 20th-century writers and artists, diaries, photographs, and correspondence of important figures in the women's suffrage movement. Particular strengths lie in the history of women, the lives of prominent alumnae, and the literary and artistic circles of early 20th-century London. The College Archives contains the official administrative and historical records of the College, professional and personal papers of faculty, administrators, and alumnae, and unique or ephemeral items reflecting other aspects of the history of the College. It provides rich primary source materials for the education of women over the last 125 years. Important collection of photographs and the papers of M. Carey Thomas, both as president of Bryn Mawr and as a leader in the women's rights movement.

Bucks County Historical Society, Spruance Library

84 South Pine Street

Doylestown, PA 18901

Repository established: 1880

Access:

Contact person: Beth Lander, Director of Library Services

Telephone: 215-345-0210 x141

Fax: 215-230-0823

E-mail: mmllib@mercermuseum.org

Web: <http://www.mercermuseum.org>

Days and hours of operation: Tuesday 1:00-9:00, Wednesday-Friday 1:00-5:00, Saturday 10:00-5:00

Appointment necessary? Not required

Holdings:

Total volume: 20,000 volumes of books and periodicals, 3,000 linear feet of manuscript collections, 3,500 linear feet of county archives, 11,000 images, maps, ephemera, newspapers

Inclusive dates: 1683 – present

Predominant dates: 1800 – present

Scope and content of holdings/collections: Collections of the Spruance Library focus on three collecting areas: the life and work of Henry Chapman Mercer; pre-industrial American material culture; and the history of Bucks County. The Spruance Library maintains collections of local newspapers, including the "Intelligencer," the "Bucks County Courier Times," the "Quakertown Free Press," and the "New Hope News/Gazette." The Library is also the depository for the archives of many county courts, including the Court of Quarter Sessions, the Court of Common Pleas, the Orphans Court as well as the Commissioners' Office and the Register of Wills.

Burlington County Historical Society

451 High Street

Burlington City, NJ 08016

Repository established: 1915

Access:

Contact person: Librarian

Telephone: 609-386-4773

E-mail: burlcohistsoc@verizon.net

Web: www.burlingtoncountyhistoricalsociety.org

Days and hours of operation: Tuesday-Saturday 1:00-5:00

Appointment necessary? Not required

Holdings:

Scope and content of holdings/collections: Volumes on the local area, with various rare and out-of-print books such as Smith's History of the Colony of Nova Caesaria or New Jersey, Schermerhorn's History of Burlington, NJ, and De Cou's Burlington, a Provincial Capital. Our collections include historical maps, deeds, scrapbooks, historical photographs, and more.

Cabrini College

Archives

610 King of Prussia Road

Radnor, PA 19087

Repository established: 1988

Access:

Telephone: 610-902-8538

Fax: 610-902-8368

E-mail: library@cabrini.edu

Web: www.cabrini.edu

Days and hours of operation: Monday-Friday 9:00-4:30

Appointment necessary? Required

Holdings:

Total volume: 155 linear feet

Inclusive dates: 1902 – present

Predominant dates: 1957 – present

Scope and content of holdings/collections: Cabrini College Archives, housed under the auspices of the campus library, preserves papers of lasting value from individual offices, departments, and organizations within the college. History of the campus site is kept in the form of photographs and some write-ups on the Paul Drexel Woodcrest Estate.

Camden County Historical Society

PO Box 387

Collingswood, NJ 08108

Repository established: 1899

Access:

Contact person: Jocelyn Koehler, Library Director

Telephone: 856-964-3333

E-mail: library.cchs@verizon.net

Web: <http://www.cchsnj.com>

Days and hours of operation: Wednesday-Friday 12:30-4:30, Sunday 12:00-5:00, and by appointment

Appointment necessary? Not required

Holdings:

Total volume: 20,000 volumes, 10,000 photographs, and microfilm holdings

Inclusive dates: 1695 – present

Predominant dates: 1750 – 1960

Scope and content of holdings/collections: The Camden County Historical Society library is dedicated to the history and genealogy of South Jersey and the Delaware Valley. Vertical files cover a wide range of subjects to complement the books and manuscripts available for research. Manuscript materials range from individual family files to business records. This is rounded out by a large collection of wills and deeds, both recorded and unrecorded. The library also has an outstanding map collection, the most complete grouping of historical Camden County newspapers on microfilm and a fine set of city directories for both Camden and Philadelphia. We also possess a growing collection of South Jersey historical documents on microfilm as well as plot and interment records from many cemeteries throughout the county.

Cape May County Historical and Genealogical Society

504 Route 9 North

Cape May Court House, NJ 08210

Repository established: 1937

Access:

Contact person: Sonia Forry, Library Coordinator; Lois Broomell, Genealogist

Telephone: 609-465-3535

Fax: 609-465-4274

E-mail: genealogy@co.cape-may.nj.us

Web: www.cmcmuseum.org/library.htm

Days and hours of operation: Wednesday, Thursday, Friday 10:00-3:30

Appointment necessary? Not required

Holdings:

Scope and content of holdings/collections: Bible records, Federal Census 1850 – 1930, NJ State Census 1885 – 1915, Church Records, Marriage Transcriptions, Surrogates Index to Wills 1800 – 2000, Family and Town Photographs, Campion and Post Research Files, Mayflower Families (21 Volumes), New Jersey Abstracts of Wills 1760 – 1817, Cemetery Transcriptions, Birth Records (Marshallville: 1835 – 1878 and Tuckahoe: 1877 – 1926), Family Books, Papers, and Newspapers on microfilm (1859 – 1975, collection indexed).

Chadds Ford Historical Society - Roland Disney Library

1736 North Creek Road

Chadds Ford, PA, 19317

Repository established: 1991

Access:

Contact person: Education Coordinator and Collections Manager

Telephone: 610-388-7376

Fax: 610-388-7480

E-mail: info@chaddsfordhistory.org

Web: www.chaddsfordhistory.org

Days and hours of operation: Monday-Friday 9:00-2:00, May-September: Saturday & Sunday 1:00-5:00

Appointment necessary? Recommended

Holdings:

Total volume: Approximately 100 linear feet

Inclusive dates: Early 18th century – present

Predominant dates: 19th century – present

Scope and content of holdings/collections: The Chadds Ford Historical Society Roland Disney Library includes commercially published volumes of local history and domestic life, small press and scholarly bound papers, and nineteenth-century business journals and personal papers. There are very limited resources for genealogical research.

Charlestown Historical Society

P.O. Box 344

Devault, PA 19432

Repository established: 1973

Access:

Contact person: John W. Pittock, President

Telephone: 610-827-1486

E-mail: rniner@att.net

Web: www.charlestown.org

Days and hours of operation: By appointment

Appointment necessary? Required

Holdings:

Total volume: Several thousand items, mostly documents, clippings, and photos

Inclusive dates: Mid-1800s – present

Predominant dates: 1880 – present

Scope and content of holdings/collections: The Charlestown Historical Society's archives contain material pertaining to Charlestown Township (Chester County, PA) history, including early residents to current ones, individuals of historic importance, agriculture, businesses, historic buildings, property owners, and other subjects.

Chemical Heritage Foundation

315 Chestnut Street

Philadelphia, PA 19106

Repository established: 1982

Access:

Contact person: Senior Archivist

Telephone: 215-873-8265

Fax: 215-925-2222

E-mail: pshea@chemheritage.org

Web: www.chemheritage.org

Days and hours of operation: Monday-Friday 10:00-4:00

Appointment necessary? Required

Holdings:

Total volume: Archives: 4,838 linear feet, Library: 100,000+ volumes, Fine Arts: 500 pieces, Chemical instruments: 2,500 units, Oral histories: 129, Images: 20,000+

Inclusive dates: 1495 – 2009

Predominant dates: 20th century

Scope and content of holdings/collections: The Chemical Heritage Foundation maintains archives, artwork, artifacts, and chemical instruments. The archival collection includes the organizational records of various chemical industries as well as scientific organizations. CHF also holds the personal papers of many notable chemists including several Nobel Laureates. The subject strengths of the collection include 20th century scientific instrumentation, alchemy, chemical education, industrial chemistry, quantum

chemistry, and polymers. Recent progress has expanded these fields to include biotechnology, electronics, pharmaceuticals, and green chemistry.

The Othmer Library of Chemical History houses more than 100,000 print volumes and 1,800 journal titles related to the chemical and molecular sciences. The library also houses The Roy G. Neville Historical Chemical Library, which includes roughly 6,000 titles, some of which date back to the late 15th century. Many of the works written before 1800 are especially rare, and some 400 titles are unique to the collection.

Chester County Archives and Records Services

601 Westtown Road, Suite 080

PO Box 2747

West Chester, PA 19380-0990

Repository established: 1982

Access:

Contact person: Archivist

Telephone: 610-344-6760

E-mail: ccarchives@chesco.org

Web: www.chesco.org/archives

Days and hours of operation: Monday-Friday 9:00-4:00

Appointment necessary? Not required

Holdings:

Total volume: 1,800 cubic feet

Inclusive dates: 1681 – 2000

Predominant dates: 1714 – 1920s

Scope and content of holdings/collections: Records generated during the normal operation of Chester County government. These include civil and criminal court records, estate records, deeds, tax records,

poor house records, road and bridge records, coroner's records and commissioners' records.

Chester County Historical Society

Library

225 North High Street

West Chester, PA 19380

Repository established: 1893

Access:

Contact person: Diane P. Rofini, Librarian

Telephone: 610-692-4800

Fax: 610-692-4357

E-mail: library@chestercohistorical.org

Web: www.chestercohistorical.org

Days and hours of operation: Wednesday-Saturday 10:00-5:00

Appointment necessary? Not required

Holdings:

Total volume: 25,000 volumes, 500,000 manuscripts, 80,000 photographs

Inclusive dates: 1668 – present

Predominant dates: 18th – 20th century

Scope and content of holdings/collections: Printed volumes and manuscripts including letters, diaries, and other personal papers, business and organization records, church records, maps, pamphlets, broadsides, newspaper clippings files, family genealogical materials, historical photographs, microfilms, periodicals, architectural and decorative arts reference materials related to all aspects of the history of Chester County and the surrounding area.

Chestnut Hill Historical Society

8708 Germantown Avenue

Philadelphia, PA 19118

Repository established: 1968

Access:

Contact person: Liz Jarvis, Curator

Telephone: 215-247-0417

Fax: 215-247-9329

E-mail: lj Jarvis@chhist.org

Web: www.chhist.org

Days and hours of operation: By appointment Tuesday-Friday 9:30-2:30 and Saturday 11:00-4:00

Appointment necessary? Required

Holdings:

Total volume: Over 20,000 items, more than 5,000 photographs

Inclusive dates: 1680s – present

Predominant dates: 1850 – present

Scope and content of holdings/collections: The Chestnut Hill Historical Society maintains a rapidly growing collection of more than 15,000 items documenting the community's architectural and social history from the 1680s to the present. The collection contains architectural drawings and other building records; more than 3,000 photographic images; maps including real estate atlases from the 1870s through the 1930s; prints, drawings, deeds, diaries, genealogical materials, books, taped and transcribed oral histories, and selected objects.

Cheyney University Archives

Leslie P. Hill Library

Cheyney and Creek Roads

Cheyney, PA 19319

Repository established: 1996

Access:

Contact person: F. Keith Bingham, University Archivist

Telephone: 610-399-2557

Fax: 610-399-2491

E-mail: kbingham@cheyney.edu

Web: www.cheyney.edu

Days and hours of operation: Monday-Friday 9:00-5:00

Appointment necessary? Required

Holdings:

Total volume: Approximately 1,000 cubic feet

Inclusive dates: Late 1700s – present

Predominant dates: 1890 – 1965

Scope and content of holdings/collections: The University Archives is charged with the acquisition, organization, and preservation of historical material relevant to the history of Cheyney University: newspaper clippings, official records, photographs, scrapbooks, artwork, school publications, personal papers, rare books, correspondence, film, and video tapes. The University Archives also possess the William H. Dorsey Collection, a treasure trove of post-Civil War African Americana, scrapbooks, photographs, and manuscripts.

College of Physicians of Philadelphia

Historical Library

19 South 22nd Street

Philadelphia, PA 19103-3097

Repository established: 1788

Access:

Contact person: Joan McKenzie, Technical Services Librarian

Telephone: 215-563-3737 x256

Fax: 215-561-6477

E-mail: jmckenzie@collegeofphysicians.org

Web: www.collegeofphysicians.org

Days and hours of operation: Tuesday-Thursday 10:00-4:00

Appointment necessary? Required

Holdings:

Total volume: 1,800 linear feet

Inclusive dates: 1244 – present

Predominant dates: 1780 – 1990

Scope and content of holdings/collections: Medieval manuscripts; student lecture notes; manuscripts and papers of physicians and leaders of American medicine, including Robley Dunglison, William W. Keen, Joseph Leidy, S. Weir Mitchell, Benjamin Rush and George Bacon Wood; archival records of medical societies, organizations, and institutions, including Philadelphia General Hospital records and records of the Philadelphia Orthopaedic Hospital and Infirmary for Nervous Diseases; and the archives of the College of Physicians of Philadelphia and the American Association for the History of Medicine. The collections are particularly rich in the areas of anatomy, cardiology, dermatology, homeopathy, neurology and neurosurgery, ophthalmology, pathology, surgery, tuberculosis and yellow fever.

Concord Township Historical Society

P.O. Box 152

Concordville, PA 19331

Repository established: 1967

Access:

Contact person: Virginia DeNenno, President

Telephone: 610-459-3518

Days and hours of operation: By appointment

Appointment necessary? Required

Holdings:

Total volume: Approximately 550 cubic feet

Inclusive dates: 1682 – present

Predominant dates: 19th and 20th centuries

Scope and content of holdings/collections: The Concord Township Historical Society houses books, archives, and manuscripts relating to the history of Concord Township, Delaware County, PA, including scrapbooks and photo albums; township minutes, tax records, and other government records, framed and loose photographs, deeds, marriage certificates, diplomas, and other personal documents; maps and atlases; research notes and files; account books and business records; school records; justice of the peace records, newspapers (including the Garnet Valley Press from 1992 – present); various individual and family collections; bibles; local history and reference books; journals and magazines; and ephemera.

Cooper University Hospital Archives

Camden Campus Library

One Cooper Plaza

Camden, NJ 08103

Repository established: 1989

Access:

Contact person: Archivist

Telephone: 856-968-7937

Fax: 856-342-9588

E-mail: fox-denise@cooperhealth.edu

Days and hours of operation: Monday and Tuesday 9:00-5:00

Appointment necessary? Required

Holdings:

Total volume: 70 linear feet

Inclusive dates: 1697 – present

Predominant dates: 1870 – present

Scope and content of holdings/collections: The CUH Archives maintains materials that document the history of Cooper Hospital, founded in Camden, New Jersey in 1875. Significant collections include records pertaining to the Cooper family and other benefactors of the hospital; the Board of Trustees; the Cooper Foundation; physicians and nurses; the Cooper Hospital School of Nursing; the Women's Board and associated auxiliaries; buildings and grounds; medical education; the 61st Station Hospital (overseas unit formed by Cooper doctors and nurses during WWII); general history and medical history of Camden City and the region. Materials include minutes, deeds, annual reports, correspondence, scrapbooks, bound volumes, newsletters, brochures, photographs, paintings, postcards, electronic media.

Corbit Calloway Memorial Library - Delmarva Collection

115 High Street

Odessa, DE 19730

Repository established: 1847

Access:

Contact person: Mary McNeeley

Telephone: 302-378-8838

Fax: 302-378-7803

E-mail: mmcneeley@nccde.org

Web: www.corbitlibrary.org

Days and hours of operation: Monday 1:00-9:00, Tuesday 10:00-5:00, Wednesday 10:00-9:00, Thursday 1:00-9:00, Friday 10:00-5:00, Saturday 9:00-12:00

Appointment necessary? Not required

Holdings:

Total volume: 11,000 items in Delmarva Collection

Inclusive dates: 1800s – present

Predominant dates: 1900 – 2000

Scope and content of holdings/collections: The Delmarva Collection is a resource of historical and genealogical materials covering the State of Delaware, the Eastern Shore of Maryland, and the two most eastern counties of Virginia (Accomack and Northampton). The main body consists of secondary research material supplemented by primary sources, such as family histories, deeds, maps, photos, and a variety of advertising materials. Highlights include extensive dissertation holdings on microfilm, a 3,000+ item postcard collection, 100+ linear feet of news clippings, 150+ maps of the Delmarva area, and 500+ published works including regional poetry and fiction. The Collection is housed within a public library facility and has been separately endowed since 1992.

Cumberland County Historical Society

PO Box 16

Greenwich, NJ 08323

Repository established: 1908

Access:

Contact person: Warren Adams, Director

Telephone: 856-455-8580

Fax: 856-455-8580

E-mail: cchistsoc.org

Web: <http://www.cchistsoc@verizon.net>

Days and hours of operation: Wednesday 10:00-4:00, Saturday and Sunday 1:00-4:00

Appointment necessary? Not required

Holdings:

Total volume: 10,000 cubic feet

Inclusive dates: 1672 – present

Predominant dates: 18th – early 20th century

Scope and content of holdings/collections: Holdings include: Deeds (1682 – 1940); 900 Genealogical files; Cemetery records; Directories (1869 – 1980); Maps, Searches, and Surveys (1700 – 1940). Collections include the Phillip Vickers Fithian Journals, Charles E. Sheppard Papers and Genealogy and Records of Japanese Internment in the US. Book Collection includes 150 Maritime books of John DuBois.

Curtis Institute of Music

Street: 1720 Locust Street

Postal: 1726 Locust Street

Philadelphia, PA 19103

Repository established: 2000

Access:

Contact person: Susannah Thurlow

Telephone: 215-717-3148

Fax: 215-717-3170

E-mail: susannah.thurlow@curtis.edu

Web: www.curtis.edu

Days and hours of operation: By appointment

Appointment necessary? Required

Holdings:

Total volume: Approximately 250 cubic feet

Inclusive dates: 1924 – present

Scope and content of holdings/collections: The Curtis Institute of Music Archives contains performance programs from 1924 to the present; photographs and clippings files on alumni, faculty, and staff; administrative files from all offices; as well as a growing number of personal collections relating to alumni and faculty.

David Library of the American Revolution

1201 River Road (Rt. 32)

PO Box 748

Washington Crossing, PA 18977

Repository established: 1974

Access:

Contact person: Academic Director

Telephone: 215-493-6776

Fax: 215-493-9276

E-mail: librarian@dlar.org

Web: www.dlar.org

Days and hours of operation: Tuesday-Saturday 10:00-5:00

Appointment necessary? Not required

Holdings:

Total volume: 10,000 reels microfilm, 40,000 books and pamphlets (bound and on microcards)

Inclusive dates: 1750 – 1800

Predominant dates: American Revolution

Scope and content of holdings/collections: Books, pamphlets, and 2,500 original manuscripts on microfilm (Sol Feinstein Collection) that relate to the political, diplomatic, military and social history of the period 1750 to 1800. The core of the collection is the large microfilm holdings, supplemented by a strong collection of reference books. The

library has microfilm collections on the period from the U.S. National Archives, the Library of Congress, state historical societies and private microfilm publishers and is particularly strong in holdings from the British Public Record Office, some of which are not available elsewhere in this country.

David Sarnoff Library

201 Washington Road

Princeton, NJ 08540

Repository established: 1967

Access:

Contact person: Alex Magoun

Telephone: 609-734-2636

Fax: 609-734-2339

E-mail: info@davidsarnoff.org

Web: <http://www.davidsarnoff.org>

Days and hours of operation: Monday-Friday 9:00-6:00

Appointment necessary? Required

Holdings:

Total volume: 3,000 cubic feet

Inclusive dates: 1895 – 1985

Predominant dates: 1942 – 1985

Scope and content of holdings/collections: David Sarnoff's papers in 500 volumes and boxes; RCA Laboratories notebooks, reports, and photos, primarily Princeton, 1930 –1985; Marconi Wireless Telegraph Company of America and RCA publications, 1912 – 1985; Vladimir Zworykin, Harry Olson, James Hillier, and Jan Rajchman Collections, 1930 – 1980; uncatalogued technical reports from RCA product divisions, 1960 – 1985; uncatalogued collections from RCA Broadcast, RCA Lancaster Picture Tube, and RCA Astro-Electronics Divisions.

Delaware Art Museum, Helen Farr Sloan Library & Archives

2301 Kentmere Parkway

Wilmington, DE 19806

Repository established: 1912

Access:

Contact person: Rachael DiEleuterio, Librarian

Telephone: 302-571-9590

Fax: 302-571-0220

E-mail: rdieleuterio@delart.org

Web: www.delart.org

Days and hours of operation: Wednesday-Friday 10:00-4:00 by appointment only

Appointment necessary? Required

Holdings:

Total volume: 38,000 volumes, 2,000 linear feet of archives

Scope and content of holdings/collections: Major collection of artists' papers including: John Sloan, Howard Pyle, Everett Shinn, and Jerome Myers. Papers of Samuel Bancroft Jr., collector of the largest Pre-Raphaelite collection in the United States.

Delaware County Archives

340 North Middletown Road, Building 19

Lima, PA 19063

Mailing Address:

Delaware County Archives

201 West Front Street

Media, PA 19063

Repository established: 2003

Access:

Contact person: Robert J. Plowman, Archivist

Telephone: 610-891-5620

Fax: 610-891-5991

E-mail: archives@co.delaware.pa.us

Web: www.co.delaware.pa.us/depts/archives.gov

Days and hours of operation: Tuesdays, Wednesdays, Thursdays 8:00-3:00

Appointment necessary? Not required

Holdings:

Total volume: 4,850 cubic feet

Inclusive dates: 1789 – 1990

Predominant dates: 1789 – 1929

Scope and content of holdings/collections: Repository for Delaware County, PA governmental records, including Wills and Administrations, Orphans' Court Estate Files, Naturalization Records, Civil and Criminal Case Files, Physicians Registrations, and Marriage and Birth & Death Records (certain years only).

Delaware County Historical Society

408 Avenue of the States

Chester, PA 19013

Repository established: 1895

Access:

Contact person: Margaret Johnson

Telephone: 610-872-0502

Fax: 610-872-0503

E-mail: mjohnson.dchs@comcast.net

Web: www.delawarecountyhistoricalociety.org

Days and hours of operation: Tuesday 1:00-8:00, Wednesday 9:00-4:00, Saturday 9:00-2:00

Appointment necessary? Not required

Holdings:

Total volume: 2,000,000 items

Inclusive dates: 1790 – present

Scope and content of holdings/collections: Holdings include over 7,000 photographs, census records 1790 – 1930, Delaware County Census 1790 – 1910, birth records from 1833, 1 million documents, 6,500 deeds, 8,500 obituaries, vast collections of WWI, WWII, and Vietnam War materials, atlases 1870 – 1934, WPA grave marker survey, tax records 1715 – 1800, and microfilmed newspapers.

Delaware Historical Society

505 Market St.

Wilmington, DE 19801

Repository established: 1864

Access:

Telephone: 302-655-7161

Fax: 302-655-7844

E-mail: deinfo@dehistory.org

Web: www.dehistory.org

Days and hours of operation: Monday 1:00-9:00, Tuesday-Friday 9:00-5:00, 3rd Saturday, 10:00-4:00 (call or check web site to confirm exact date)

Appointment necessary? Not required

Holdings:

Total volume: 7,000 linear feet

Inclusive dates: 1559 – present

Predominant dates: 1680 – 1975

Scope and content of holdings/collections: Books, manuscripts, maps, newspapers, ephemera, photographs on all aspects of Delaware history. Strong genealogical holdings.

Delaware Public Archives

121 Duke of York Street

Dover, DE 19901

Repository established: 1905

Access:

Contact person: Director

Telephone: 302-744-5000

Fax: 302-739-2578

E-mail: archives@state.de.us

Web: www.archives.delaware.gov

Days and hours of operation: Monday-Tuesday, Thursday-Friday 8:00-4:15, Wednesday 8:00-7:45, first and third Saturday of the month 9:00-4:45

Appointment necessary? Not required

Holdings:

Total volume: Over 40,000 cubic feet

Inclusive dates: 1653 – present

Predominant dates: 1680 – present

Scope and content of holdings/collections: The Delaware Public Archives holds the non-current records of Delaware's state and local governments, as well as manuscript collections, genealogical records, and other reference materials. State government records include the public papers of Delaware's governors, the official register of gubernatorial actions, legislation, house of representative and senate journals, court dockets and case files. Local government records

include land records, probate files, tax assessment records, county or municipal minutes, and school records. The Archives also has a number of genealogical records such as official birth, marriage, and death certificates from the Office of Vital Statistics, a marriage records collection, tombstone records, church records, and family histories. There are numerous collections of private papers relating to prominent Delawareans and businesses in the state. Other collections include state publications, pamphlets, maps, photographs, newspaper clippings, architectural drawings, and Delaware-related books.

Drexel University Archives and Special Collections

Hagerty Library

3141 Chestnut Street

Philadelphia, PA 19104-2875

Repository established: 2000

Access:

Contact person: University Archivist

Telephone: 215-895-1757

Fax: 215-895-2070

E-mail: archives@drexel.edu

Web: www.library.drexel.edu/archives/

Days and hours of operation: Monday-Friday 9:00-4:30, Wednesday evenings 5:00-8:00

Appointment necessary? Recommended

Holdings:

Total volume: Approximately 600 linear feet, 8,000 volumes

Inclusive dates: 1478 – present

Predominant dates: 1891 – present

Scope and content of holdings/collections: The Drexel University Archives contains papers related to Drexel University, which was founded by A. J. Drexel in 1891. The collection features papers of the

University's administration and academic departments, as well as University-related and University-sponsored publications, faculty publications, student theses and dissertations, and a large collection of photographs. The Drexel University Archives also includes material related to the Drexel family, the 1876 Centennial, George Childs (publisher of the Public Ledger and friend of A.J. Drexel), 19th-century fashion and decorative art, library and information science, cooperative education, domestic science (home economics), Frank Thompson (1841 – 1899, a railroad executive), and Documentation Abstracts. The archives also include the special collections material of W.W. Hagerty Library, featuring 1,500 volumes including 12 incunabula as well as the book collection of George M. Standish.

Drexel University College of Medicine Archives & Special Collections

Hagerty Library

3141 Chestnut Street

Philadelphia, PA 19104

Repository established: 1977

Access:

Contact person: Joanne Murray, Director

Telephone: 215-895-6661

Fax: 215-895-6660

E-mail: archives@drexelmed.edu

Web: <http://archives.drexelmed.edu>

Days and hours of operation: Monday-Friday 9:30-4:30

Appointment necessary? Required

Holdings:

Total volume: 4,000 linear feet

Inclusive dates: 16th century – present

Predominant dates: 1850 – present

Scope and content of holdings/collections: Woman's Medical College/Medical College of Pennsylvania and the Archives & Special Collections on Women in Medicine: The WMC/MCP collections are composed of the institution's Archives and the Special Collections on Women in Medicine, collectively reflecting the history of the college and women in medicine. As the record of the first regular medical school educating women, the archives are integral to the history of women in medicine. The Special Collections reach beyond the records of the College to include primary and secondary materials on the history of all women physicians, internationally.

Hahnemann University & Historic and Homeopathic Medicine: The Hahnemann Collection reflects the history of the institution and its mission. The University, founded in 1848 as the Homoeopathic Medical College of Pennsylvania and later known as Hahnemann Medical College, initially educated physicians in homeopathy before gaining national prominence as an academic medical center. The materials date from the 16th century to the present, with an emphasis on institutional records. The collection houses records of the College and Hospital from the earliest times, including the North American Academy at Allentown (1835) and related organizations, various affiliated institutes and hospitals and several early homeopathic societies. Because of the formative role played by the school in teaching the system of homeopathic medicine, the early records in particular reflect the history of homeopathy in the United States.

The Archives will be moving to East Falls when its new building is completed in 2010.

Educational Testing Service

Rosedale Road

Mail Stop 36-B

Princeton, NJ 08540

Repository established: 1969

Access:

Contact person: Jason Wagner, Information Specialist/Archivist; Andre Pollack, Information Specialist/Archivist

Telephone: 609-734-5296, 609-734-1722

Fax: 609-683-7186

E-mail: jwagner@ets.org; apollack@ets.org

Days and hours of operation: Monday-Friday 8:00-4:30

Appointment necessary? Required

Holdings:

Total volume: 2,300 cubic feet

Inclusive dates: 1669 – present

Predominant dates: 1947 – present

Scope and content of holdings/collections: Materials pertaining to the educational, research, and testing activities of ETS (1947 – present) and to a lesser degree the earlier testing activities of its founding organizations: the American Council on Education, the Carnegie Foundation for the Advancement of Teaching, and the College Board. Included are corporate records; research reports, papers, presentations, journal articles, and speeches by staff members, corporate publications, photographs, audiovisual material, and manuscript collections of significant ETSers and individuals outside of ETS involved in education and/or psychology.

Fairmount Park Historic Resource Archive

One Parkway Building

1515 Arch Street, 10th Floor

Philadelphia, PA, 19102

Repository established: 1867

Access:

Contact person: Rob Armstrong, Historic Preservation Specialist

Telephone: 215-683-0229

Fax: 215-683-0205

E-mail: rob.armstrong@phila.gov

Web: www.fairmountpark.org

Days and hours of operation: Tuesday and Thursday 9:00-5:00

Appointment necessary? Required

Holdings:

Total volume: Approximately 1,200 cubic feet

Inclusive dates: 1850s – present

Predominant dates: 1867 – present

Scope and content of holdings/collections: The Fairmount Park Historic Resource Archive collects, preserves, and makes available primary documents that characterize, depict, or explain the geographical expansion of the Park and its infrastructural improvement from the 19th century to the present; maps, plans, renderings, architectural and/or engineering drawings depicting structures and infrastructure within the bounds of the Park; photographic prints, slides, negatives, stereo-views, engravings, lithographs, paintings, and posters identified as depicting landforms, structures, and activity with Fairmount Park; primary documents dealing with the origins, construction, and inhabitants of homes, dwellings, and other structures extant or demolished within the boundaries of the Fairmount Park System; annual reports of the Fairmount Park Commission; three-dimensional objects, books, memorabilia, working management documents, and academic works concerning the Park.

Felician College Archives

262 South Main Street

Lodi, NJ 07644

Repository established: 2000

Access:

Contact person: Archivist

Telephone: 201-559-6191

Fax: 201-559-6044 or 201-559-6188

E-mail: olenderv@felician.edu

Web: <http://www.felician.edu>

Days and hours of operation: Monday-Friday 8:30-4:30

Appointment necessary? Required

Holdings:

Total volume: 300 linear feet

Inclusive dates: 1923 – present

Predominant dates: 1968 – present

Scope and content of holdings/collections: Felician College located in Bergen County, New Jersey is a Catholic/Franciscan college where scholarship and the practice of teaching and learning place students first. The holdings of the archives document the archival records of both the Lodi and Rutherford campuses. The Archives includes the history, administration, divisions, departments, faculty, students, alumni, and other series.

Free Library of Philadelphia – Print and Picture Collection

1901 Vine Street

Philadelphia, PA 19103

Repository established: 1927

Access:

Contact person: Head, Print and Picture Collection

Telephone: 215-686-5405

Fax: 215-563-3628

E-mail: erefPIX@freelibrary.org

Web: www.freelibrary.org

Days and hours of operation: Monday-Friday 9:00-5:00

Appointment necessary? Not required

Holdings:

Total volume: 1,254,334 items

Inclusive dates: 1400 – present

Predominant dates: 19th and 20th century

Scope and content of holdings/collections: The Picture Collection serves as a loan service of purely visual materials (over one million images in all media and on all subjects) that can be borrowed with a library card. Special Collections for research and study include the Lewis Portrait Collection (200,000 portrait prints, universal in subject coverage); the Hampton L. Carson Collection of Napoleonic Prints (3,300 pieces); Philadelphia (20,000 images); Americana (8,000 images); the Jackson Collection of American Lithographs (275 prints); Fine Art Prints and Photographs (12,000 original art works); the Rosenthal Collection of Drawings by American Artists (846 drawings by artists of the 19th and 20th century); drawings, prints and photographs from the WPA Art Project (approximately 1,400 items), and Artists' Books (approximately 100 volumes).

Friends Historical Library at Swarthmore College

500 College Avenue

Swarthmore, PA 19081-1399

Repository established: 1871

Access:

Contact person: Curator

Telephone: 610-328-8496

Fax: 610-690-5728

E-mail: friends@swarthmore.edu

Web: www.swarthmore.edu/fhl.xml

Days and hours of operation: Monday-Friday 8:30-4:30, Saturday, when Swarthmore is in session, 10:00-1:00

Appointment necessary? Not required

Holdings:

Total volume: 10,000 linear feet

Inclusive dates: 1574 – present

Predominant dates: 1650 – present

Scope and content of holdings/collections: Besides housing the archives of Swarthmore College and the Swarthmore Historical Society Archives, the Friends Historical Library maintains collections which document the history and doctrine of the Society of Friends, Quaker activity in literature, sciences, business, education and government, plus reform efforts in peace, Indian rights, women's rights, and abolition of slavery. It serves as the official repository for the records of Philadelphia, New York, and Baltimore Yearly Meetings and holds both original and microfilm records of other meeting archives. Related collections contain records of organizations either sponsored directly by Quakers or in which Quakers were prominent. A small sampling of personal papers include those of Lucretia Mott, Elias Hicks, John Greenleaf Whittier, John Bright, Samuel M. Janney, and the Elington, Ferris, Fisher-Warner, Painter-Biddle, Walton, and Wharton families. There is an extensive image collection of Quaker meeting houses, portraits of Friends and illustrations of Friends institutions and service work. A large number of maps, deeds, marriage certificates and genealogical charts are also available.

German Society of Pennsylvania

611 Spring Garden Street

Philadelphia, PA 19123

Repository established: 1817

Access:

Contact person: Violet Lutz, Librarian

Telephone: 215-627-2332

Fax: 215-627-5297

E-mail: librarian@germansociety.org

Web: www.germansociety.org

Days and hours of operation: By appointment, please contact librarian

Appointment necessary? Required

Holdings:

Total volume: 70,000+ volumes

Inclusive dates: 18th century – present

Predominant dates: 19th century

Scope and content of holdings/collections: The manuscript holdings include the records of the German Society of Pennsylvania (dating from 1764 to the present), and records of other German-American organizations, especially those in Philadelphia. The collection also includes historical materials related to German-American life from the settlement of Germantown to the early 20th century. Holdings are described in: Kevin Ostoyich, *The German Society of Pennsylvania: A Guide to Its Book and Manuscript Collections* (Washington, DC: German Historical Institute, 2006; Reference Guide 20 - <http://www.ghidc.org/publications/ghipubs/rg/rg020/rg20.pdf>).

Germantown Historical Society

Library/Archives

5501 Germantown Avenue

Philadelphia, PA 19144

Repository established: 1901

Access:

Contact person: Sandra L. Chaff, Librarian/Archivist

Telephone: 215-844-1683

Fax: 215-844-2831

E-mail: library@germantownhistory.org

Web: www.germantownhistory.org

Days and hours of operation: Tuesday 9:00-1:00, Thursday 1:00-5:00, Sunday 1:00-5:00 (check hours on telephone voice mail before Sunday visits to be sure of access and hours on Sundays)

Appointment necessary? Not required

Holdings:

Inclusive dates: 1531 – present

Scope and content of holdings/collections: The Germantown Historical Society maintains a museum, library, archives, and special collections that collects, preserves, and makes available for research use materials on what was once known as the German Township, and is today known as the Germantown, Mt. Airy, and Chestnut Hill sections of Philadelphia. Materials include books; personal and family papers of individuals with Germantown connections; records of Germantown businesses, associations, clubs, and other organizations, among which are an extensive collection of materials on the Wissahickon and the records of the nation's first commuter railroad; the Philadelphia, Germantown, and Norristown Railroad; as well as documents representing the diverse ethnic, economic, religious, political, and social groups in Germantown; oral history transcripts and tapes; rare German imprints including the first German Bible printed in America; photographs, glass plate slides and negatives, daguerreotypes, and cased ambrotypes; videotapes; DVDs; prints; and unique runs of newspapers.

Girard College History Collection

Founder's Hall

2101 South College Avenue

Philadelphia, PA 19121

Repository established: 1831

Access:

Contact person: Elizabeth Laurent, Director of Historic Resources

Telephone: 215-787-2680

Fax: 215-787-4404

E-mail: elaurent@girardcollege.com

Web: www.girardcollege.com

Days and hours of operation: Monday-Friday 8:00-2:00

Appointment necessary? Required

Holdings:

Total volume: 1,500 volumes, 800 archival boxes

Inclusive dates: 1750 – present

Predominant dates: 1775 – 1831

Scope and content of holdings/collections: The Stephen Girard Collection includes hundreds of domestic artifacts from the home of Girard College Founder Stephen Girard (1750 – 1831). The corresponding archival collection provides makers' names, precise dates, and purchase price for many of the artifacts, making the Stephen Girard Collection the city's best-documented, intact, single-owner collection for the early national period. The Stephen Girard Archives includes the personal and business papers of Stephen Girard, including correspondence, personal library, ledgers, receipt books, maps, charts, price lists, and logbooks. The collection includes 1,300+ volumes, 800 archival boxes and the contents of several flat files. The Girard Papers have been microfilmed and a duplicate set of film is available to scholars at the American Philosophical Society Library – the Society's library is generally an easier research facility than Girard College, as it has more extensive hours and is handicapped accessible. The Architectural Drawings Collection includes the 1832 competition drawings for the original Girard College Campus, including work by Strickland, Haviland, and Thomas U. Walter. It also includes 80+ Walter construction drawings for his remarkable Greek Revival composition (1833 – 1847). The Girardiana Collection is artifacts and archival material relating to the history of the school, 1832 to the present. Please note the institutional archive of Girard College is not publicly accessible.

Gloucester County Historical Society

17 Hunter Street

Woodbury, NJ 08096

Repository established: 1903

Access:

Contact person: Library Coordinator

Telephone: 856-845-4771

Fax: 856-845-0131

E-mail: gchs@net-gate.com

Web: <http://www.rootsweb.com/~njgchs>

Days and hours of operation: Monday-Friday 1:00-4:00, Tuesday 6:00-9:30, first Saturday of each month 10:00-4:00, last Sunday of each month 2:00-5:00

Appointment necessary? Not required

Holdings:

Total volume: 3,000 cubic feet

Inclusive dates: 1984 – present

Predominant dates: 19th and 20th century

Scope and content of holdings/collections: The Gloucester County Historical Society Library specializes in genealogy, and its collections are varied. Included are hundreds of vertical files on South Jersey/Delaware Valley families; over 3,000 reels of microfilm pertaining to area census records, wills, newspapers, deeds, church and cemetery data; vital statistics extracted from newspapers; and over 10,000 volumes on history and genealogy. The library is also the repository for Gloucester County maps, manuscripts, diaries, account books, newspapers, and photographs, and it houses the archives for the county document collection.

Grand Army of the Republic Civil War Museum and Library

4278 Griscom Street

Philadelphia, PA 19124-3954

Repository established: 1926

Access:

Contact person: President

Telephone: 215-289-6484

E-mail: garmuslib@aol.com

Web: www.garmuslib.org

Days and hours of operation: Tuesday 10:00-4:00, other times by appointment

Appointment necessary? Recommended

Holdings:

Total volume: 3,000 volumes and approximately 300 cubic feet of archives and manuscripts

Inclusive dates: 1860s – present

Predominant dates: 1860s – 1890s

Scope and content of holdings/collections: The Grand Army of the Republic Civil War Museum and Library contains some 3,000 books and 300 cubic feet of archives and manuscripts relating to the Civil War and the activities of the Grand Army of the Republic and related organizations. The archives include a fairly complete set of the records of GAR Post # 2 of Philadelphia, as well as the records of several dozen other GAR posts, mostly from the Philadelphia area but several from other parts of the nation as well. There are also the records of other Civil War-related organizations, such as the Philadelphia Camp of the Sons of Union Veterans of the Civil War, Daughters of Union Veterans, Ladies of the GAR, and others. The collection also includes some 1860s muster out rolls and other original military service records. There is also a significant amount of manuscript material such as letters, diaries, scrapbooks, and photographs in various formats; prints and lithographs; complete sets of two Philadelphia newspapers during the Civil War years, along with individual issues of other Civil War-era newspapers.

Griffith Morgan House

The Griffith Morgan Committee, Inc.

243 Griffith Morgan Lane

Delair, NJ 08110

Repository established: 1972

Access:

Contact person: Treasurer

Telephone: 856-665-1948

Fax: 856-665-6846

E-mail: Kayrudd@aol.com

Days and hours of operation: By appointment only

Appointment necessary? Required

Holdings:

Predominant dates: 1840 – 1850

Scope and content of holdings/collections: The Griffith Morgan House, circa 1693, contains period furnishings and artifacts and personal effects of the Morgan Family. Also housed are 1840's letters written by Charles Champion Morgan from Iowa.

Gwynedd-Mercy College

1325 Sumneytown Pike

PO Box 901

Gwynedd Valley, PA 19437-0901

Repository established: 1986

Access:

Contact person: Archivist/Librarian

Telephone: 215-641-5587

Fax: 215-641-5596

E-mail: rosenbaum.m@gmc.edu

Web: <http://www.gmc.edu>

Days and hours of operation: Monday, Wednesday, Friday 1:00-4:00

Appointment necessary? Required

Holdings:

Total volume: 500 linear feet

Inclusive dates: 1947 – present

Scope and content of holdings/collections: Materials consist of papers, photographs, sound recordings, videotapes, motion picture film, and memorabilia representing the history of the college and its founding by the Sisters of Mercy, including materials documenting the development of an innovative nursing program with a clinical practicum.

Haddonfield Public Library

60 Haddon Avenue

Haddonfield, NJ 08033

Repository established: 1803

Access:

Contact person: Director

Telephone: 856-429-1304

Fax: 856-429-3760

E-mail: contact@haddonfieldlibrary.org

Web: <http://www.haddonfieldlibrary.org>

Days and hours of operation: Monday-Friday 10:00-9:00, Saturday 10:00-5:00, Sunday 1:00-5:00

Appointment necessary? Not required

Holdings:

Total volume: 60 linear feet

Inclusive dates: 19th century – present

Predominant dates: 20th century

Scope and content of holdings/collections: Collections focus on New Jersey and local history, in particular the history of Haddonfield and

environs. It includes primarily secondary sources, but also some maps, a pamphlets file, photographs, local organization records, and files on all houses and buildings in Haddonfield.

Hagley Museum and Library

P. O. Box 3630

298 Buck Rd.

Wilmington, DE 19807

Repository established: 1957

Access:

Telephone: 302-658-2400

Fax: 302-658-0568

E-mail: Use webform at: www.hagley.org/library/askhagley.html

Web: www.hagley.org/library

Days and hours of operation: Monday-Friday 8:30-4:30, second Saturday of the month (to consult manuscripts on the second Saturday of the month, call by 1:00 PM on the previous Friday)

Appointment necessary? Not required

Holdings:

Total volume: Manuscripts & Archives: 34,000 linear feet; Pictorial Collections: 2,000,000+ images (photographs & prints); 3,000+ motion pictures & video tapes; 2,500 audio tapes plus miscellaneous other AV formats; Imprints: 250,000 volumes; Digital Collections: 32,000 and growing.

Inclusive dates: 1438 – present

Predominant dates: 1800 – 1990

Scope and content of holdings/collections: Hagley's library furthers the study of business and technology in America. The collections include individuals' papers and companies' records ranging from eighteenth-century merchants to modern telecommunications and illustrate the impact of the business system on society. The Center for

the History of Business, Technology, and Society organizes scholarly conferences, research seminars, and administers research grants for the Hagley Library.

Haverford College

Quaker and Special Collections

370 Lancaster Avenue

Haverford, PA 19041

Repository established: 1833

Access:

Contact person: John Anderies, Head of Special Collections

Telephone: 610-896-1161

Fax: 610-896-1102

E-mail: HC-Special@haverford.edu

Web: <http://www.haverford.edu/library/special>

Days and hours of operation: Monday-Friday 9:00-12:30 and 1:30-4:30

Appointment necessary? Preferred

Holdings:

Total volume: 8,000 linear feet

Inclusive dates: 13th century – present

Predominant dates: 1700 – present

Scope and content of holdings/collections: The principle collections include the world-renowned Quaker Collection, college archives, rare books and manuscripts, and fine art. The Quaker Collection consists of some 35,000 printed volumes and 300,000 manuscripts. Holdings span the history of Quakerism from 17th-century Britain to the present day in many parts of the world. Materials include the Jenks Collection of early books and pamphlets, meeting records, organization and family papers, journals and diaries, English and American Quaker serials, audiovisual materials, and a comprehensive collection of Quaker fiction. The college archives consist of published and unpublished

documents, graphics, photography, artifacts, and audiovisual materials that document the history and operations of Haverford College from its founding in 1833 to present. Rare books cover all fields of knowledge with particular strengths in literature (particularly Shakespeare and the works that influenced him), natural history, science, and American history. Non-Quaker manuscripts include such collections as the Charles Roberts Autograph Letter Collection which is comprised of some 20,000 letters from a wide variety of authors, and the J. Rendel Harris "Oriental" Manuscript Collection of 13th- through 19th-century Hebrew, Latin, Arabic, Syriac, Armenian and Ethiopic scrolls and codices. Finally, we maintain the college's collection of art including 3,000 fine art photographs ranging the history of the genre, hundreds of prints by European, American and Asian artists, numerous oil paintings, sculpture, and Ancient Greek, Middle Eastern, and African artifacts.

Henry Francis du Pont Winterthur Museum

5105 Kennett Pike

Winterthur, DE 19735

Repository established: 1952

Access:

Contact person: E. Richard McKinstry

Telephone: 302-888-4699

Fax: 302-888-3367

E-mail: ermcki@winterthur.org

Web: <http://www.winterthur.org>

Days and hours of operation: Monday-Friday 8:30-4:30

Appointment necessary? Not required

Holdings:

Total volume: 100,000 volumes, 2,700 manuscript groups, 170,000 photographs, 4,000 linear feet of institutional archives

Inclusive dates: 1600s – 1900s

Predominant dates: 1700s – 1800s

Scope and content of holdings/collections: Collection documents craftsmanship, material culture, everyday life in America, horticulture in the US, and Winterthur as a private estate and public museum.

Historic St. George's United Methodist Church

235 N. 4th St.

Philadelphia, PA 19106

Repository established: 1767

Access:

Contact person: Donna Miller, Administrator

Telephone: 215-925-7788

E-mail: office@historicstgeorges.org

Web: www.historicstgeorges.org

Days and hours of operation: Monday-Friday 10:00-3:00, tours by appointment on Saturday

Appointment necessary? Recommended

Holdings:

Total volume: 1,500 volumes, 300 items

Inclusive dates: 1767 – current

Predominant dates: 1767 – 1850

Scope and content of holdings/collections: Items pertaining to the founding of the Methodist denomination in America, including the chalice sent by John Wesley, a pulpit Bible presented by Francis Asbury, and the handwritten journal of Joseph Pilmoor, the original minister. Portraits of many early figures, including Asbury and Pilmoor. Archives also contain records of closed churches in the Eastern Pennsylvania Conference.

Historic Yellow Springs

P.O. Box 62

1685 Art School Road

Chester Springs, PA 19425

Repository established: 1974

Access:

Contact person: Sandy Momyer, Archivist

Telephone: 610-827-7414 x19

Fax: 610-827-1336

E-mail: archives@yellowsprings.org

Web: www.yellowsprings.org

Days and hours of operation: Tuesday and Thursday 9:00-1:00

Appointment necessary? Required

Holdings:

Total volume: 300 linear feet

Inclusive dates: 1722 – present

Predominant dates: 1868 – present

Scope and content of holdings/collections: The collections represent the six record groups that document the history of the village of Yellow Springs. This includes art, archives, photographic images and objects falling into the following record groups by chronological time period: Record Group 1 — Revolutionary War and before (1721 – 1781), Record Group 2 — Spa Periods (1782 – 1861), Record Group 3 — Civil War and PA Soldiers' Orphans School (1862 – 1912), Record Group 4 — Pennsylvania Academy of the Fine Arts Country School (1916 – 1952), Record Group 5 — Good News Productions (1952 – 1974), Record Group 6 — Historic Yellow Springs (1974 – present).

Historical Society of Bensalem Township

3211 Knights Road

PO Box 1101

Bensalem, PA 19020

Repository established: 1977

Access:

Telephone: 215-946-1744

Fax: 215-639-2687

Web: <http://thsbt.org/>

Days and hours of operation: Wednesday 9:00-12:00

Appointment necessary? Required

Holdings:

Inclusive dates: 1692 – present

Scope and content of holdings/collections: Collection consists of 58 original land deeds of Bensalem Township, early family genealogies, early maps of Bensalem, slide presentations showing houses (old and new) and places throughout the township, many then and now shots, books and histories of surrounding areas of Bensalem.

Historical Society of Fort Washington

473 Bethlehem Pike

Fort Washington, PA 19034

Repository established: 1936

Access:

Contact person: Nick Guilbert or Buck Amey

Telephone: 215-646-6065

E-mail: robinC416@comcast.net

Web: www.amblerhistory.com

Days and hours of operation: Wednesday 2:00-4:00, other times by appointment. Closed July & August

Appointment necessary? Required, except Wednesdays 2:00-4:00

Holdings:

Total volume: Approximately 35 original items

Inclusive dates: 1800 – 1937

Predominant dates: Late 19th – early 20th century

Scope and content of holdings/collections: Assorted record books from Mumbower Mill, Whitehall Turnpike Company, Ledgers from local doctor and businesses, Lower Gwynedd Voter List, Upper Dublin Tax Book - 1903, minutes of local organizations, Upper Dublin Supervisors - early financial accounts.

Historical Society of Frankford

1507 Orthodox Street

Philadelphia, PA 19124

Repository established: 1905

Access:

Contact person: Archivist

Telephone: 215-743-6030

E-mail: library@frankfordhistory.org

Web: www.frankfordhistoricalsociety.org

Days and hours of operation: By appointment

Appointment necessary? Required

Holdings:

Total volume: 1,500 cubic feet

Inclusive dates: 1562 – present

Predominant dates: 1681 – present

Scope and content of holdings/collections: The Library of the Historical Society of Frankford is comprised of books, archives, and manuscripts that document the history of Northeast Philadelphia and the neighborhood of Frankford specifically, but also includes a wealth of materials pertaining to the greater Philadelphia area, as well as Pennsylvania, Quaker, and Civil War history. The Library houses the records of local businesses, institutions, and organizations; personal papers and manuscripts; photographs; maps and deeds; school records; scrapbooks; illustrations and works of art on paper; postcards; pamphlets and published materials; newspapers; journals; rare books; ephemera; autographs; reference books; and other materials. Although the collection has a primarily regional focus, there are also numerous materials of national significance, such as the J. Friend Lodge Collection of Abraham Lincoln and Civil War materials; a complete set of the records of the nation's first savings and loan institution, a collection of late 17th- and early 18th-century deeds relating to the early settlement of Pennsylvania, including several signed by William Penn; and a number of 18th- through 20th-century business records of mills and factories in Frankford, which was one of the nation's most important industrial and manufacturing communities.

Historical Society of Montgomery County

1654 DeKalb Street

Norristown, PA 19401

Repository established: 1881

Access:

Contact person: Executive Director

Telephone: 610-272-0297

Fax: 610-272-2609

E-mail: contact_us@hsmcpa.org

Web: <http://www.hsmcpa.org>

Days and hours of operation: Monday and Thursday 9:00-5:00,
Tuesday and Wednesday 1:00-9:00

Appointment necessary? Not required

Holdings:

Total volume: 3,000 linear feet, 30,000 volumes of books, pamphlets, and periodicals

Inclusive dates: Early 18th century – present

Predominant dates: Late 18th century – present

Scope and content of holdings/collections: Our library holds items that relate to the history of Montgomery County through books, periodicals, pamphlets, manuscript collections (personal and business relevance), newspapers (original and microfilm), photographs, maps, scrapbooks, church, cemetery, and family records. We also preserve many thousands of original county government records: marriage licenses, deeds, naturalizations, indictment, and tax records. In addition, we also maintain a collection of objects and artifacts which are displayed in thematically-based exhibits.

Historical Society of Moorestown

12 High Street

PO Box 477

Moorestown, NJ 08057

Repository established: 1970

Access:

Contact person: Stephanie Herz, Archivist

Telephone: 856-235-0353

E-mail: moorestownhistory@verizon.net

Web: <http://www.moorestown.com/history>

Days and hours of operation: Tuesday 1:00-4:00, second Saturday of each month 1:00-4:00

Appointment necessary? Not required

Holdings:

Scope and content of holdings/collections: Holdings include volumes concerning local history, manuscript collections, and a photographic archive.

Historical Society of Pennsylvania

1300 Locust Street

Philadelphia, PA 19107-5699

Repository established: 1824

Access:

Contact person: Lee Arnold, Library Director

Telephone: 215-732-6200 x237

Fax: 215-732-2680

E-mail: lib@hsp.org

Web: www.hsp.org

Days and hours of operation: Tuesday and Thursday 12:30-5:30,
Wednesday 12:30-8:30, Friday 10:00-5:30

Appointment necessary? Not required

Holdings:

Total volume: 560,000 books, pamphlets, and serials; 312,000 graphic items; 19 million manuscripts

Inclusive dates: 1460 – present

Predominant dates: 1680 – 1975

Scope and content of holdings/collections: Over 6,000 collections comprise the combined holdings of The Historical Society of Pennsylvania (HSP), The Balch Institute for Ethnic Studies (which merged into the Society on January 1, 2002), and The Genealogical Society of Pennsylvania (which entered into a Strategic Alliance with HSP on October 10, 2006).

The Society's holdings document the economic, social, and political history of the middle colonies from the 1650s to the present, including the papers of William Penn and the Penn family, John Dickinson, James Buchanan, George Mifflin Dallas, Jay Cooke, James Logan, Salmon P. Chase and Joel R. Poinsett. There are two large autograph collections (Simon Gratz and Ferdinand J. Dreer) as well as prints, photographs, architectural drawings and maps, which document the Delaware Valley in particular. Organizational archives include those of the Indian Rights Association and the Pennsylvania Abolition Society.

The Balch Institute's holdings document and interpret the ethnic and immigrant experience in the United States since 1877. These include books, personal papers, organizational records, photographs, audio recordings, newspapers and pamphlets representing late 19th and 20th century American ethnic life. The largest collections pertain to Chinese, German, Greek, Italian, Irish, Japanese, Jewish, Polish, Latino, Carpatho-Rusyn, Scottish, Slovak, and Ukrainian communities in the United States. Specific collections include The Leonard Covello Papers, Atlantis National Daily Greek Newspapers, Nelson Diaz Papers, Shigezo and Sonoko Iwata Papers, Scots Thistle Society, and the Fiorani Radio Production Records.

Historical Society of Phoenixville Area

204 Church Street

Phoenixville, PA 19460

Repository established: 1977

Access:

Contact person: Jack Ertell, President

Telephone: 610-935-7646

E-mail: hspa@verizon.net

Web: www.phoenixvillehistoricalsociety.org

Days and hours of operation: Wednesday and Friday 9:00-3:00, first Sunday of the month 1:00-4:00, other times by appointment

Appointment necessary? Not required

Holdings:

Total volume: Approximately 30,000 items accessioned

Inclusive dates: Late 18th century – present

Predominant dates: Post-Civil War – present

Scope and content of holdings/collections: The Historical Society of Phoenixville Area holds a wide range of documents, photographs and artifacts related to the history of the Phoenixville area. Holdings include a large clippings library, local newspapers on microfilm and a small library. Emphasis is on the industrial history of the area, social and religious institutions and general history.

Historical Society of Princeton

158 Nassau Street

Princeton, NJ 08542

Repository established: 1938

Access:

Contact person: Eileen Morales, Curator of Collections

Telephone: 609-921-6748

Fax: 609-921-6939

E-mail: eileen@princetonhistory.org

Web: <http://www.princetonhistory.org>

Days and hours of operation: Tuesday and Saturday 1:00-4:00

Appointment necessary? Not required

Holdings:

Total volume: 800 manuscript collections, 40,000+ photographs and negatives, 2,000 architectural drawings

Inclusive dates: Early 18th century – present

Predominant dates: Late 19th through mid-20th century

Scope and content of holdings/collections: The Historical Society of Princeton's research collections document some aspect of nearly any topic in Princeton's history from the early 18th century through present day. Manuscripts, photographs, maps, architectural drawings, newspapers and vertical files form the basis of a research collection that serves many members of the public, from professors to students, journalists, and genealogists. Manuscript collections include family papers, such as those from the Stockton and Olden families, records of businesses and organizations in Princeton, such as the Princeton Area League of Women Voters, and documentation from legal entities in Princeton, such as the Princeton Board of Education. Vertical files filled with newspaper clippings, articles, and images cover a multitude of topics from Albert Einstein to Palmer Square.

Historical Society of Tacony

4819 Longshore Avenue, 2nd Floor

Philadelphia, PA 19135

Repository established: 1990

Access:

Contact person: Louis Iatarola

Telephone: 215-331-1551, 215-338-8790

Fax: 215-332-9266

E-mail: lmioftacony@comcast.net

Web: www.historictacony.org

Days and hours of operation: By appointment

Appointment necessary? Required

Holdings:

Total volume: Approximately 75 separate subject files & boxes, over 500 images, dozens of vintage tools, periodicals, and souvenir booklets

Inclusive dates: 1850 – present

Predominant dates: 1900 – present

Scope and content of holdings/collections: Collections focus primarily on the Tacony community, the oldest portions of which date to the 1860s and 1870s. The most extensive holdings involve the Disston Saw Works, Dodge Steel Castings, various religious congregations, and inventor Frank Shuman. The papers of Magistrate Thomas South, who served for a time as Philadelphia's Director of Public Safety, include hundreds of original documents, letters, diaries, and a political scrapbook of newspaper clippings circa 1900. Other holdings include Dr. David Umstead's record of births, a Disston Real Estate sales book, many old newspapers from Northeast Philadelphia and vicinity as well as some city-wide newspaper issues, Scientific American articles from 1892, and images and articles on other Northeast Philadelphia neighborhoods.

Holy Family University Archives

Northeast Philadelphia Campus - The Library

9801 Frankford Avenue

Philadelphia, PA 19114-2009

Repository established: 1973

Access:

Contact person: University Archivist

Telephone: 267-341-3414

Fax: 215-632-8067

E-mail: gfarr@holyfamily.edu

Web: <http://www.holyfamily.edu/library/archives.shtml>

Days and hours of operation: Saturdays 9:00-5:00 and by appointment

Appointment necessary? Recommended

Holdings:

Total volume: 400 cubic feet

Inclusive dates: 1954 – present

Predominant dates: 1954 – 1995

Scope and content of holdings/collections: The Archives serves as a repository for the official records of Holy Family University including records of offices, divisions, and academic and administrative departments. Holdings include departmental files, correspondence, minutes, interoffice communications, public relations files, photographs, publications, and architectural plans. Holdings document the history of Holy Family University, a Catholic institution established by the Sisters of the Holy Family of Nazareth (CSFN). The university had its roots in the educational mission of the Sisters who conducted the Nazareth Academy High School and the Holy Family Teacher Training School at Torresdale, Northeast Philadelphia, on property surrounding their provincialate building. In 1954 the Sisters obtained a charter to establish Holy Family College, a four-year liberal arts college for women, at the Torresdale site. The development of academic programs at the college and subsequently its schools of arts and sciences, education, nursing, and business administration, followed, as did coeducation, in 1971, and the achievement of official university status in 2002.

Hunterdon County Historical Society

114 Main Street

Flemington, NJ 08822

Repository established: 1885

Access:

Contact person: Director

Telephone: 908-782-1091

E-mail: hunterdonhistory@embarqmail.com

Days and hours of operation: Thursday 12:00-4:00, second and fourth Saturday of each month 10:00-4:00, and by appointment

Appointment necessary? Not required

Holdings:

Total volume: 1,200 cubic feet

Inclusive dates: 1698 – present

Predominant dates: 1840 – present

Scope and content of holdings/collections: The Hiram E. Deats Memorial Library, the library of the Hunterdon County Historical Society, holds over 5,000 volumes, 1,000 reels of microfilm, and a large collection of periodicals that pertain to Hunterdon County history and genealogy. In addition, the library has been an archival repository since 1969, whose holdings include the personal papers of prominent local citizens and families, the business and legal records of historical area businesses, records of research concerning local history, photographs, maps, genealogical files, newspaper holdings, and other material that document the history of Hunterdon County and its people.

Independence National Historical Park Library & Archives

143 S. 3rd Street

Philadelphia, PA 19106

Repository established: 1951

Access:

Contact person: Archivist/Manager of the Library

Telephone: 215-597-2069

Fax: 215-597-3969

E-mail: karen_stevens@nps.gov

Web: <http://www.nps.gov/inde/library-and-archives.htm>

Days and hours of operation: Monday-Friday 9:30-4:30

Appointment necessary? Required

Holdings:

Total volume: Approximately 1,800 cubic feet, 95,000 photographs, 25,000 drawings

Inclusive dates: 1873 – present

Predominant dates: 1947 – present

Scope and content of holdings/collections: Holdings document the cultural resources - historical, architectural, landscape and museum assets - preserved and managed by Independence NHP since its establishment in 1948. The collections contain the City of Philadelphia's management records of Independence Hall and the other 4 buildings on Independence Square, 1873 – 1950. Additional historical sites in INHP are: First Bank of the US, Second Bank of the US, Merchants' (Philadelphia) Exchange Building, Bishop White House, Todd House, Deshler-Morris House in Germantown, City Tavern, Welcome Park, and the Presidents' House. Other historic sites under the custody of INHP include Edgar Allan Poe National Historic Site, Thaddeus Kosciuszko National Memorial, and Gloria Dei (Old Swedes') Church National Historic Site.

Independence Seaport Museum

J. Welles Henderson Archives and Library

211 South Columbus Boulevard

Penn's Landing at Walnut Street

Philadelphia, PA 19106

Repository established: 1960

Access:

Contact person: Archives and Library Director

Telephone: 215-413-8639

Fax: 215-925-6713

E-mail: library@phillyseaport.org

Web: www.phillyseaport.org

Days and hours of operation: Wednesday-Friday 10:00-5:00

Appointment necessary? Required

Holdings:

Total volume: 13,000 volumes, 750 maps/charts, 9,000 boat plans, 25,000 images

Scope and content of holdings/collections: Special collections focus on the maritime history of the Delaware Valley region and include letters, diaries, logbooks, business records, photographs, plans, oral histories, ephemera and memorabilia relating to local shipbuilding companies, merchants, tradesmen, sailors and their families. The library also maintains a reference collection of more than 13,000 volumes on topics such as naval history and architecture, marine art, oceanography, and local history.

Institute for Advanced Study Archives

Historical Studies - Social Science Library

Einstein Drive

Princeton, NJ 08540

Repository established: 1986

Access:

Contact person: Librarian

Telephone: 609-734-8276

Fax: 609-951-4515

E-mail: hslib@ias.edu

Web: <https://library.ias.edu/hs/archives.php>

Days and hours of operation: Monday-Friday 9:00-4:00

Appointment necessary? Required

Holdings:

Total volume: 600 linear feet

Inclusive dates: 1929 – present

Predominant dates: 1940 – 1980

Scope and content of holdings/collections: The papers in the collection date from 1929 and include official correspondence of the Director's Office, minutes of meetings of the Faculty and Board of Trustees, miscellaneous correspondence concerning past faculty members, and records of the Electronic Computer Project. Papers of

individuals have been placed elsewhere. For example, Albert Einstein's archive is at Hebrew University in Jerusalem and both John von Neumann's and J. Robert Oppenheimer's papers are at the Library of Congress.

James A. Michener Art Museum

Library

138 South Pine Street

Doylestown, PA 18901

Repository established: 1988

Access:

Contact person: Librarian

Telephone: 215-340-9800 x150

Fax: 215-340-9807

E-mail: library@michenerartmuseum.org

Web: <http://www.michenermuseum.org>

Days and hours of operation: By appointment

Appointment necessary? Required

Holdings:

Total volume: 200 linear feet

Inclusive dates: 1800 – present

Predominant dates: 1890 – present

Scope and content of holdings/collections: The James A. Michener Library is primarily a research and reference facility. It maintains individual files on more than 1,500 Bucks County artists of all creative disciplines (visual, performing, literary), as well as files related to the museum's exhibition history. The library's book collection is mainly focused on American art and landscape art in particular, Bucks County art and artists, including Pennsylvania impressionism, and landscape painters.

Lafayette College

Special Collections and College Archives

Skillman Library, 710 Sullivan Road

Easton, PA 18042

Repository established: 1978

Access:

Contact person: Special Collections Librarian and College Archivist

Telephone: 610-330-5148 or 610-330-5401

Fax: 610-252-0370

E-mail: shawd@lafayette.edu

Web: <http://ww2.lafayette.edu/~library/special/home.php>

Days and hours of operation: Monday-Friday 10:00-12:00 and 1:00-5:00, 9:00 a.m. by appointment

Appointment necessary? Preferred

Holdings:

Total volume: 20,000 volumes, 2,000 cubic feet

Inclusive dates: Second century – present

Predominant dates: 1832 – present

Scope and content of holdings/collections: The holdings relate primarily to the history of Lafayette College, including college publications, manuscripts, printed materials, photographs, and faculty and alumni papers. Special Collections include the Marquis de Lafayette collection of books, manuscripts, prints, and memorabilia; the Stephen Crane collection; the Tinsman, Conahay, and Fox angling collection; the William E. Simon papers; the Hugh Moore Dixie Cup Company Collection; the Robert B. Meyner and Helen Stevenson Meyner Papers; and the papers of American illustrator and painter Howard Chandler Christy. In addition, there is a general rare book collection.

Lansdale Historical Society

Jenkins Homestead and Research Center

137 Jenkins Avenue

Lansdale, PA 19446

Repository established: 1972

Access:

Contact person: Richard D. Shearer, President

Telephone: 215-855-1872

Fax: 215-393-8919

E-mail: info@lansdalehistory.org

Web: <http://lansdalehistory.org>

Days and hours of operation: Wednesday and Thursday 12:00-5:00,
Saturday 9:00-12:00

Appointment necessary? Not required

Holdings:

Inclusive dates: 1870 – present

Scope and content of holdings/collections: 138-year collection of *Lansdale Reporter/North Penn Reporter* newspapers; 100,000+ local photographs, negatives and digital images; 10,000+ collection of local history books, genealogies, high school yearbooks. Collection of local memorabilia and artifacts displayed on a rotating basis in a small museum.

LaSalle University - Archives

Connelly Library

1900 West Olney Avenue

Philadelphia, PA 19141

Repository established: 1984

Access:

Contact person: Archivist

Telephone: 215-951-1294

Fax: 215-951-1261, please use cover sheet

E-mail: grabenst@lasalle.edu

Web: www.lasalle.edu/library/archiv.htm

Days and hours of operation: Monday-Friday 8:30-4:30 and by appointment

Appointment necessary? Required

Holdings:

Inclusive dates: 1863 – present

Scope and content of holdings/collections: The Archives of LaSalle University incorporates and records the documentary and photographic history of LaSalle, with special emphasis on student publications, catalogs, departmental annual reports, and any appropriate item which captures the educational mission and heritage of a 130+ year old institution.

LaSalle University - Brothers of the Christian Schools, Baltimore Province

Connelly Library

1900 West Olney Avenue

Philadelphia, PA 19141

Repository established: 1991

Access:

Contact person: Archivist

Telephone: 215-951-1294

Fax: 215-951-1261, please use cover sheet

E-mail: grabenst@lasalle.edu

Days and hours of operation: Monday-Friday 8:30-4:30 and by appointment

Appointment necessary? Required

Holdings:

Inclusive dates: 1845 – present

Scope and content of holdings/collections: The Archives of the Baltimore Province covers the documentary and photographic history of the Brothers' schools and communities in the mid-Atlantic region. The best known teaching establishment, LaSalle University in Philadelphia, was founded in 1863 and bears the name of the founder, St. John Baptist de LaSalle (Patron of All Teachers). Of particular interest are the yearbooks, newspapers, and related items of the Brothers' schools and also information about the individual Brothers who staffed those schools.

LaSalle University - Special Collections

Connelly Library

1900 West Olney Avenue

Philadelphia, PA 19141

Repository established: 1990s

Access:

Contact person: Director of Libraries

Telephone: 215-951-1285

Fax: 215-951-1595

E-mail: baky@lasalle.edu

Web: www.lasalle.edu/library/speccoll.htm

Days and hours of operation: Contact the Director of Libraries

Appointment necessary? Required

Holdings:

Scope and content of holdings/collections: LaSalle University's Department of Special Collections holds the following collections: Imaginative Representations of the Vietnam War, Imaginative

Representations of the Holocaust, Charles Willson Peale, Owen Wister, Bob Dylan, and Contemporary Film Promotional Materials. Of particular note are the comprehensive works of Owen Wister and a complete collection of Bob Dylan recordings, including bootleg and pirated materials.

Library Company of Philadelphia

1314 Locust Street
Philadelphia, PA 19107

Repository established: 1731

Access:

Contact person: Books materials -- Chief of Reference; Graphic Materials -- Curator of Prints and Photographs

Telephone: 215-546-3181, Print Room: 215-546-8229

E-mail: Book materials: cking@librarycompany.org; Graphic materials: printroom@librarycompany.org

Web: www.librarycompany.org

Days and hours of operation: Monday-Friday 9:00-4:45

Appointment necessary? Recommended

Holdings:

Total volume: 500,000 volumes, 75,000 graphics, 160,000 manuscripts

Inclusive dates: 1500 – 1950

Predominant dates: 1700 – 1900

Scope and content of holdings/collections: The Library Company of Philadelphia is a non-profit independent research library with collections documenting every aspect of the history and background of American culture from the colonial period to the end of the 19th century. A collection of national importance, its holdings number approximately half a million printed volumes in a wide variety of formats, 75,000 graphics, 160,000 manuscripts, and a small, distinguished collection of early American art and artifacts. The printed and graphic materials are especially strong in women's history,

economic history, Afro-Americana, American Judaica, German-Americana, the colonial, Revolutionary, and Civil War periods, 19th century photography, education, philanthropy, agriculture, the architectural and cultural history of Philadelphia, and the history of printing.

Lower Merion Historical Society

506 Bryn Mawr Avenue

P.O. Box 2602

Bala Cynwyd, PA 19004

Repository established: 1949

Access:

Contact person: Jerry Francis

Telephone: 610-664-3216

E-mail: lmhistory@comcast.net

Web: www.lowermerionhistory.org

Days and hours of operation: Wednesday 7:00-9:00, Saturday 2:00-4:00, other times by appointment

Appointment necessary? Recommended

Holdings:

Total volume: 30,000 items, including 4,000 books, 8,000 photos, 17,000 vertical files, and 1,000 other items

Inclusive dates: 1650 – present

Predominant dates: 19th and 20th century

Scope and content of holdings/collections: Materials relating to the history of Lower Merion and the Main Line/Philadelphia area, including books, manuscripts, photographs, pamphlets, reprint articles, antique maps, Main Lines atlases, materials on local families and individuals, churches, businesses and organizations, industrial history, and Main Line mansions.

Margaret R. Grundy Memorial Museum

610-680 Radcliffe Street

Bristol, PA 19007

Repository established: 1967

Access:

Contact person: Donna McCloskey

Telephone: 215-788-7891 x13

Fax: 215-788-4976

E-mail: dm@grundymuseum.org

Web: <http://www.grundymuseum.org>

Days and hours of operation: Monday-Saturday, hours may vary

Appointment necessary? Required

Holdings:

Total volume: 355 linear feet

Inclusive dates: Late 17th century – present

Predominant dates: 19th and 20th centuries

Scope and content of holdings/collections: The Bristol History Collection is comprised of materials related to the town of Bristol and the surrounding communities in Bucks County, PA. Subject areas include: early settlement, immigration, industrial growth and development, transportation, the Delaware River, Burlington Island, ethnic groups, families, schools, religious and other local organizations, hospitals, theaters, businesses, properties, and prominent individuals and events. The corresponding archival collection includes an assortment of municipal records from the Borough of Bristol. The documents in this collection include Council minutes, ordinances, resolutions, maps, surveys, Justice of the Peace dockets, and departmental records. The Grundy Family Archives are a collection of the personal, business, and political papers of a prominent industrialist and political family in southeastern Pennsylvania. The Grundy Family Archives are not publicly accessible.

Mennonite History Library & Archives

Mennonite Historians of Eastern Pennsylvania

565 Yoder Road, Box 82

Harleysville, PA 19438

Repository established: 1967

Access:

Contact person: Librarian/Curator

Telephone: 215-256-3020 x111

Fax: 215-256-3023

E-mail: info@mhep.org

Web: <http://www.mhep.org>

Days and hours of operation: Tuesday-Friday 10:00-5:00, Thursday 7:00-9:30 p.m.

Appointment necessary? Not required

Holdings:

Total volume: 15,735 volumes and items, 831 linear feet archival manuscript materials, 106 photographic collections

Inclusive dates: 1528 – present

Predominant dates: 1800 – present

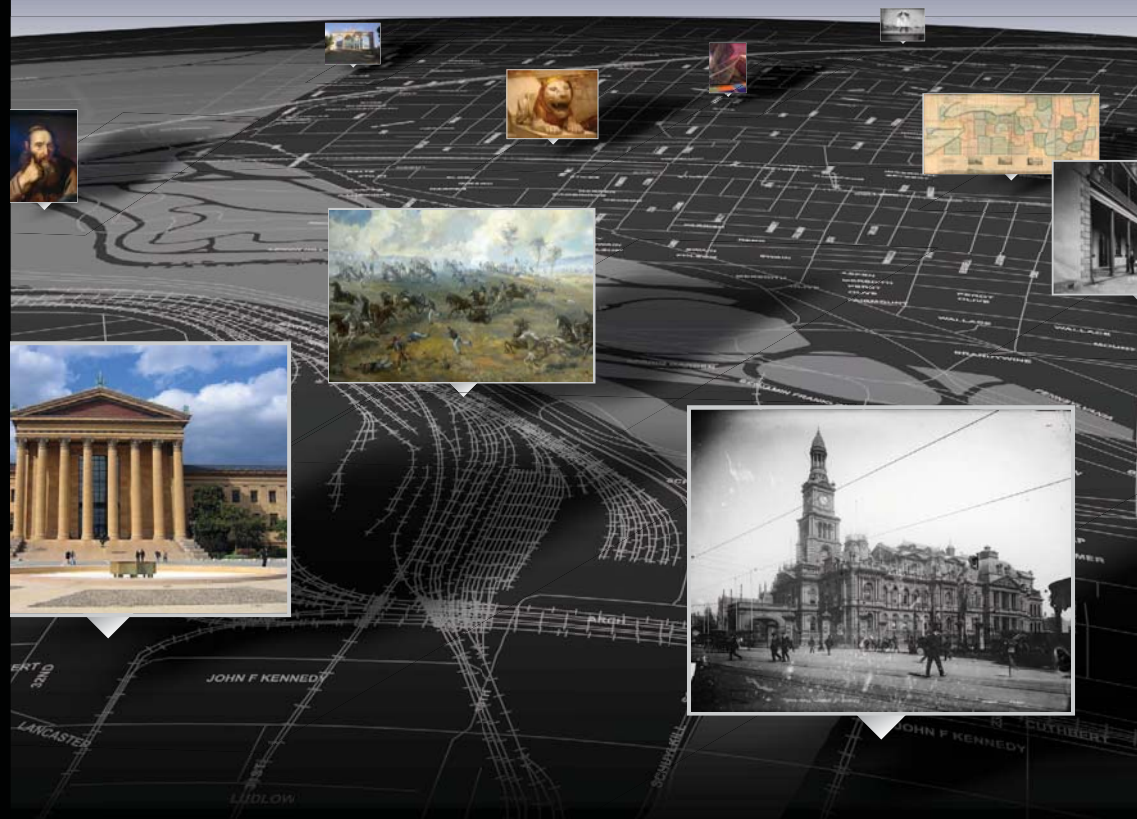
Scope and content of holdings/collections: Contains over 15,735 books, bound periodicals, audio and video tapes, manuscript and archives collections, maps, prints, broadsides, deeds, photographs, microfilm rolls, newspapers, and genealogical files relating to three centuries of Mennonite life in southeastern Pennsylvania. Rare books date from 1528, manuscripts from the late 1720s, Mennonite Church records from the 1720s, ministerial records and letter collections from the 1840s, and diaries and account books from the 1740s.

The Academy of Certified Archivists



Answering “**WHAT IS AN ARCHIVIST?**” since 1989

Put your Collection on the Map™



Sajara® is a unique web-based
geographic digital asset management tool.

Use the power of geography to manage, retrieve, and display collections of digitized
photographs, maps, audio recordings, and video clips, from any location in the world.



Learn More: rcr@avencia.com 215.925.2600 www.avencia.com/sajara

Sajara® is a product of Avencia. It supports a variety of mapping platforms: ESRI, Open Source, Google.



Document Imaging Systems

- Complete Imaging and Microfilming Systems
- Customized Systems and Software developed specifically for County Government Offices including:

Enterprise Content Management Systems

Land Recording Systems

E-Forms & Document Management Systems

Extensive experience with NJ DARM certification

Office Systems & Interiors

- Systems Furniture/Workstations
- Caseloads and Seating
- Computer Furniture
- Filing/Storage Equipment.
- Larson Record Desk/Roller Shelving
- Spaceplanning and Design Services

Furniture available through New Jersey State Contract

**1574 Reed Road
Pennington, NJ 08534**

**(800) 331-4100
www.cbs-nj.com**

CONSERVATION CENTER

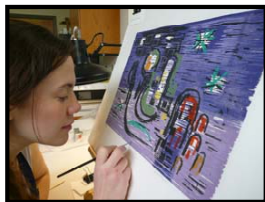
for Art and Historic Artifacts

The Conservation Center for Art and Historic Artifacts (CCAHA), established in 1977, is one of the largest nonprofit regional conservation laboratories in the country. CCAHA serves cultural, educational, and research institutions; government agencies; corporations; private organizations and collectors throughout the United States.

CCAHA's mission is to provide expertise and leadership in the preservation of the world's cultural heritage.



- CCAHA specializes in the treatment of works of art and artifacts on paper, such as drawings, prints, maps, posters, historic wallpaper, photographs, rare books, scrapbooks, and manuscripts, as well as related materials such as parchment and papyrus.
- CCAHA provides on-site consultation services, educational programs and seminars, internships, and emergency conservation services.
- CCAHA offers a high-tech digital documentation studio for the creation of high-quality facsimiles.
- CCAHA has the ability to treat oversize materials, to handle a large volume of work, and to meet deadlines.
- CCAHA offers a state-of-the-art laboratory with a 24-hour monitored security system.



264 S. 24th Street, Philadelphia, PA 19103
t 215.545.0613 f 215.735.9313 www.ccaha.org



Protect. Preserve. Let The Whole World Know.

Microfiche, microfilm and
aperture card scanners

Walk-up book scanners and
book copiers

Robotic book scanners

Archive writers

High and low-volume
document scanners

Full-service conversion bureau

Parts and supplies

Technical support on all equipment

For nearly 30 years,
The Crowley Company
has helped archivists
preserve and digitize
collections of all types,
ranging from the very rare
to the high-volume. Crowley's
cutting-edge hardware and
software imaging solutions
for digital and analog imaging
needs gives the world digital
access to the treasures
you cherish.

**ZEUTSHEL
1200C A1
Book Scanner**



**MEKEL
TECHNOLOGY
MACH V
Strip Scanner**



For more information on Crowley Company
products and services, call **240-215-0224** or
e-mail: info@thecrowleycompany.com

CROWLEY

www.thecrowleycompany.com

**AGFA Extek Microsystems HF Processors InoTec IRIS
Kodak Mekel Technology Qidenus S-T Imaging Zeutschel**

The Genealogical Society of New Jersey

Invites your organization to join ours!

GSNJ is a non-profit organization dedicated to procuring, preserving and publishing information on New Jersey families. If your archives has a New Jersey focus, we encourage you to join us as a subscriber.

Organization subscriptions include a subscription to the *Genealogical Magazine of New Jersey*, published three times a year, and to the *GSNJ Newsletter*, published quarterly.

Individual memberships also include free queries in the GSNJ Newsletter, discounts on GSNJ publications and educational seminars, and more.

Annual Subscription: \$25

For a brochure & application send an SASE to:

GSNJ Membership Services

Attention: D. V. Lowry

PO Box 1476

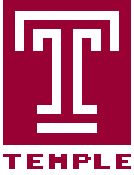
Trenton NJ 08607-1476



Join us for our **Spring Program** in Somerset County – **May 30 2009**

Open to the public

For more information – please visit our website: www.gsnj.org



TEMPLE UNIVERSITY'S PROGRAM IN ARCHIVAL EDUCATION

Founded in 1973 by the late Fredric Miller, Temple University continues to offer a series of archival administration classes. These classes delve into the nature of primary sources and their relationship to history; the history and nature of archives; archival appraisal, arrangement, and description; reference, access and use of records; management and administration of archives, manuscript collections and archival collections; and issues and techniques of conservation and preservation in an archival setting. In addition, students will become acquainted with archival automation, legal issues related to archival administration, records management, historical methods, and some of the principle philosophical issues in archival thought. The introductory course features a hands-on processing project, and is also useful for individuals with archival responsibilities but little practical experience.

The introductory course, HIS 8153, Introduction to Archives and Manuscripts, is offered 5:10pm-7:10pm on Thursdays in the Spring semester. Classes meet in the Library of the American Philosophical Society, next door to Independence Hall. The sequence is a qualifying element for those wishing to take the Certified Archivists exam, and the course credits may be applied toward Temple's MA/PhD in history or the MLS at Drexel University. Non-degree seeking students may also take the course utilizing Temple's non-matriculated status. The instructor, Martin Levitt, has been teaching the sequence since 1993, and has been a working archivist for 25 years. For further information about archival education at Temple, call him at (215) 440-3403 or e-mail mlevitt@amphilsoc.org. Further information about the sequence may found on-line at <http://www.temple.edu/history/KO/levitt/>

Monmouth County Archives

125 Symmes Drive

Manalapan, NJ 07726

Repository established: 1987

Access:

Contact person: Gary D. Saretzky, Archivist

Telephone: 732-308-3772

Fax: 732-780-4458

E-mail: gsaretzk@co.monmouth.nj.us

Web: <http://www.visitmonmouth.com/archives>

Days and hours of operation: Monday-Friday 9:00-4:00

Appointment necessary? Recommended

Holdings:

Total volume: 2,662 boxes, 4,030 volumes

Inclusive dates: 1665 – present

Predominant dates: 1720s – 1995

Scope and content of holdings/collections: Records of Monmouth County government departments, especially County Clerk, including deeds, mortgages, marriages, naturalizations, building contracts, licenses; Board of Chosen Freeholder minutes and other records; court records; and special collections, the largest of which are local news videos and newspaper clippings, 1970s – 1990s. See website for finding aids.

Montgomery Township Historical Society

P.O. Box 678

Montgomeryville, PA 18936

Repository established: 1988

Access:

Contact person: Kathleen Sands

Telephone: 215-822-1437

Web: www.knappfarm.org

Days and hours of operation: By appointment

Appointment necessary? Required

Holdings:

Inclusive dates: 18th century – present

Scope and content of holdings/collections: Collection relates to the history of Montgomery Township (Montgomery County, PA), its residents and historical buildings.

Moravian Archives

41 W. Locust St.

Bethlehem, PA, 18018

Repository established: 1757

Access:

Contact person: Paul Peucker

Telephone: 610-866-3255

Fax: 610-866-9210

E-mail: info@moravianchurcharchives.org

Web: www.moravianchurcharchives.org

Days and hours of operation: Monday-Friday 8:00-4:30

Appointment necessary? Recommended

Holdings:

Total volume: 17,000 linear feet

Inclusive dates: 1472 – present

Predominant dates: 1740 – 2000

Scope and content of holdings/collections: Records from the Moravian Church throughout North America (central administration of the denomination, records from congregations); records relating to missions, especially among American Indians; financial records; records from educational institutions; paintings; book collection, including the 1751 Bethlehem congregational library; records from the Moravian Church in Labrador, Nicaragua, and Eastern West Indies.

Moravian College and Moravian Theological Seminary

Archives, Reeves Library

1200 Main Street

Bethlehem, PA 18018-6650

Repository established: 1988

Access:

Contact person: Temporary Contact: David Schappert, Director of Reeves Library

Telephone: 610-861-1540

Fax: 610-861-1577

E-mail: DSchappert@moravian.edu

Web: <http://home.moravian.edu/public/reeves/about/specialcollections.html>

Days and hours of operation: By appointment

Appointment necessary? Required

Holdings:

Total volume: 422 linear feet

Inclusive dates: 1671 – present

Predominant dates: 20th century

Scope and content of holdings/collections: The Archives documents the history of Moravian College and Moravian Theological Seminary and their precursors through publications such as yearbooks, catalogs and newspapers; minutes, reports, and correspondence generated by

trustees, administrators and faculty; audio-visual material, including a large collection of photographs; student records and theses; subject files; and other materials. Some digitized archival information of ours also appears on the site of the Bethlehem Digital History Project, bdhp.moravian.edu/home/home.html, which we co-sponsor with Bethlehem Area Public Library.

Moravian Historical Society

214 E. Center Street

Nazareth, PA 18064

Repository established: 1857

Access:

Contact person: Curator

Telephone: 610-759-5070

Fax: 610-759-2461

E-mail: info@moravianhistoricalsociety.org

Web: <http://www.moravianhistoricalsociety.org>

Days and hours of operation: Monday-Friday 9:00-5:00

Appointment necessary? Required

Holdings:

Inclusive dates: 1740 – present

Predominant dates: 18th and 19th century

Scope and content of holdings/collections: Collection includes documents and objects relating to the history and culture of the Moravian Church in America, with significant concentrations in Moravian theology and worship practices, local settlements, fine and performing arts, business practices, and international missions.

National Archives and Records Administration - Mid Atlantic Region

900 Market Street

Philadelphia, PA 19107-4292

Repository established: 1969

Access:

Contact person: Reference Services

Telephone: 215-606-0112

E-mail: philadelphia.archives@nara.gov

Web: www.archives.gov/midatlantic

Days and hours of operation: Monday-Friday 8:00-5:00, second Saturday of each month 8:00-4:00

Appointment necessary? Required

Holdings:

Total volume: 67,000 cubic feet

Inclusive dates: 1789 – 2000

Predominant dates: 19th and 20th century

Scope and content of holdings/collections: Records of some 80+ federal agencies and federal courts operating in Delaware, Maryland, Pennsylvania, Virginia, and West Virginia. Records of the US District Courts are our major holdings, followed by the US Court of Appeals for the Third and Fourth Circuits, the US Army Corps of Engineers, the US Navy, US Coast Guard, US Mint, as well as many smaller agencies. Microfilm holdings include census records, 1790-1930; Civil War records, 1861-1865; Revolutionary War records, 1775-1783; passenger list indexes for vessels arriving in Philadelphia (1800-1948), Baltimore (1820-1952), and other ports; and naturalization petitions, 1795-1968. Please consult our online listings for the most detailed and current information.

Neumann College

Neumann College Archives

One Neumann Drive

Aston, PA 19014

Repository established: circa 1970

Access:

Telephone: 610-361-5206

Fax: 610-459-1370

E-mail: carrm@neumann.edu

Days and hours of operation: Monday-Friday 9:00-12:00, 1:00-5:00

Appointment necessary? Required

Holdings:

Inclusive dates: 1958 – present

Scope and content of holdings/collections: The Neumann College Archives contains official records of the college, including reports, minutes, correspondence, publications, memorabilia, photographs, slides, videos, and discs. Special Collections include the Betty Neumann Archives (Nurse Theorist).

New Jersey State Archives

225 West State Street

P.O. Box 307

Trenton, NJ 08625-0307

Repository established: 1920

Access:

Contact person: Reference

Telephone: 609-292-6260

Fax: 609-396-2454

E-mail: archives.reference@sos.state.nj.us

Web: www.njarchives.org

Days and hours of operation: Monday-Friday 8:30-4:30

Appointment necessary? Not required

Holdings:

Total volume: 35,500 cubic feet and 30,500 reels of microfilm

Inclusive dates: 1660 – present

Predominant dates: 1740s – present

Scope and content of holdings/collections: The New Jersey State Archives is the state's official repository for all public records of enduring historical value. The greater part of the collection consists of records created by offices, agencies, and departments of the state and colony of New Jersey. This includes governors' records; petitions to the governor and legislature; colonial land records; New Jersey wills, 1670 – 1952; 20th century election returns; New Jersey Military records for all conflicts dating from the American Revolution through World War I; state census records, 1855 – 1915; vital statistics: marriage, births and deaths, 1848 – 1900; railroad, turnpike, and canal maps and records; the Works Progress Administration's Historical Records Survey; and colonial and state court records, 1704 – 1948. The Archives also maintains some original county and municipal records, the latter mostly from defunct municipalities. The county records are generally justices of the peace dockets, commons pleas court records, and tavern licenses. The Archives also has a large and growing microfilm collection including over 10,000 reels of pre-1900 county records and nearly 9,000 reels of 18th-and 19th-century New Jersey newspapers. The Archives also maintains a 2,000 volume book collection relating to archives guides, preservation of collections and New Jersey History.

New Jersey State Library

Documents Collection/Jerseyana Collection

185 West State Street

PO Box 520

Trenton, NJ 08625-0520

Access:

Contact person: Deborah Mercer / John Shaw

Telephone: 609-278-2640 x103

Fax: 609-984-7900

E-mail: dmercerc@njstatelib.org

Web: <http://www.njstatelib.org>

Days and hours of operation: Monday-Friday 8:30-5:00

Appointment necessary? Not required

Holdings:

Scope and content of holdings/collections: The New Jersey State Library is the primary depository for official publications of state government that are intended for public distribution. These include departmental annual reports, statistical reports, transcripts of legislative hearings, and special studies from the early part of the 19th century to the present. In addition, the State Library maintains an extensive collection of materials on all aspects of New Jersey (the Jerseyana Collection), other than those found in the official documents collection, embracing its history, culture, people, geography, politics, etc. Many of these titles are held in multiple copies and represent the largest collection of circulating Jerseyana materials in the state.

Newark Public Library, Special Collections Division

5 Washington Street

PO Box 630

Newark, NJ 07101-0630

Repository established: circa 1900 (NPL established 1888)

Access:

Contact person: William J. Dane, Jared Ash, Chad Leinaweaver

Telephone: 973-733-7745

Fax: 973-733-5648

E-mail: wdane@npl.org; jash@npl.org; cleinaweaver@npl.org

Web: <http://www.npl.org/Pages/Collections/specialcollections1.html>

Days and hours of operation: By appointment only

Appointment necessary? Required

Holdings:

Total volume: 3,000 – 5,000 linear feet

Inclusive dates: 1400 – present

Predominant dates: 1870 – present

Scope and content of holdings/collections: The backbone of the Special Collection Division includes graphic and visual materials as well as several subject-based book collections. The fine print collection includes examples of each printing format (etchings, engravings, lithographs) from a variety of artists from Albrecht Dürer (1471 – 1528) to Roy Lichtenstein (1923 – 1997). The fine printing collection thus includes books, files, type specimens and broadsides dealing with fine presses, famous printers, and book designers while the rare book collection covers a variety of subjects from science, geography, and literature. The Division also has various holdings of ephemera (menus, trade cards, bank notes), manuscripts (autographs, artists' files, gallery records, research notes), as well as collections of artists' books, pop-up and movable books, illustrated books, historical art periodicals, Christmas books, and historic children's literature.

Northampton County Historical & Genealogical Society

107 South Fourth Street

Easton, PA 18042

Repository established: 1910

Access:

Contact person: Librarian

Telephone: 610-253-1222

Fax: 610-253-4701

Web: <http://www.northamptonctymuseum.org>

Days and hours of operation: Monday-Friday 9:00-2:00

Appointment necessary? Required

Holdings:

Inclusive dates: 18th century – present

Predominant dates: 19th and 20th century

Scope and content of holdings/collections: Photographs, family histories, personal papers, manuscripts, ledgers (merchants), and genealogical and historical information of Northampton County from 1752 to the present.

Ocean County Historical Society

26 Hadley Avenue

Toms River, NJ 08753

Repository established: 1950

Access:

Contact person: Patricia H. Burke, Curator

Telephone: 732-341-1880

Fax: 732-341-4372

E-mail: PatriciaHBurke@co.ocean.nj.us

Web: www.oceancountyhistory.org

Days and hours of operation: Tuesday & Wednesday 1:00-4:00, first Saturday of every month 1:00-4:00

Appointment necessary? Not required

Holdings:

Inclusive dates: 1850 – 1950

Predominant dates: 19th century

Scope and content of holdings/collections: The Society collects materials that relate to the history of Ocean County including daybooks, store ledgers, account books, deeds, hotel registers, bank notes, and the bound volumes of Ocean County newspapers from 1850 – 1950. We are the repository for 130 volumes of Justice of the Peace books, some of which predate 1850. The collections cover the cranberry and blueberry industries; the history of Lakehurst and the airships; Barnegat Bay decoys; hunting, fishing and tourism; charcoal making in the Pine Barrens; the Barnegat Glass Works; railroads; shipbuilding; iron works; clay works; the Revolutionary War and the salt works; privateering; and the early Quakers and the Mormons.

Old Barracks Museum

50 Barrack Street, 3rd Floor

Trenton, NJ 08625

Repository established: 1902

Access:

Contact person: Curator

Telephone: 609-396-1776

Fax: 609-777-4000

E-mail: barracks@voicenet.com

Web: <http://www.barracks.org>

Days and hours of operation: Daily 10:00-5:00

Appointment necessary? Required

Holdings:

Total volume: 20 linear feet

Inclusive dates: 1700 – 1999

Predominant dates: 1775 – 1840

Scope and content of holdings/collections: Holdings consist largely of documents and photographs relating to the history of the Old Barracks, the Revolutionary War, and local history. Other documents in the collection, including deeds, receipts, and miscellaneous papers, pertain to the early history of New Jersey. The museum possesses several daybooks and ledgers from local businesses dating from the mid-18th to mid-19th centuries. The Wright-McKesson Family Papers include travel diaries, maps, letters, and receipts. Papers and an account book from the Potts family of Trenton are also among the Museum holdings. This includes photographs (1910 – 1917) as well as documents. The archives from the second restoration (circa 1980 – 1999) are unprocessed but available upon request. The Revolutionary War documents contain receipts, muster rolls, and service certificates, mostly from New Jersey (1775 – 1781). Barrack-masters accounts and other archival holdings relating to the construction and use of the Barracks (1758 – 1792) are also available.

Old York Road Historical Society

460 Old York Road

Jenkintown, PA 19046

Repository established: 1936

Access:

Contact person: Archivist/Librarian

Telephone: 215-886-8590

E-mail: info@oyrhs.org

Web: <http://www.oyrhs.org>

Days and hours of operation: Monday 7:00-9:00 PM, Tuesday 11:00-2:00, Wednesday 11:00-3:00, and by appointment

Appointment necessary? Not required

Holdings:

Total volume: 2,000 volumes, 165,000 photos, 450 linear feet

Inclusive dates: 1682 – present

Predominant dates: 1880 – present

Scope and content of holdings/collections: Holdings cover the communities along and adjacent to the Old York Road from Rising Sun in Philadelphia to New Hope in Bucks County with primary emphasis on eastern Montgomery County including Abington, Cheltenham, Lower Moreland and Upper Moreland townships, and the boroughs of Bryn Athyn, Hatboro, Jenkintown, and Rockledge. Holdings include books, maps, property atlases, deeds, photographs, post cards, manuscripts, ephemera, architectural drawings, government records, church records, genealogical materials, historical building surveys and inventories, school yearbooks, scrapbooks, and local newspapers. Manuscript collections include the papers of many local associations, organizations, businesses, and prominent families.

Peirce College

1420 Pine Street

Philadelphia, PA 19102

Repository established: 1988

Access:

Contact person: Chief Librarian

Telephone: 215-670-9270

Fax: 215-670-9338

E-mail: library@peirce.edu

Web: www.peirce.edu

Days and hours of operation: Monday-Friday 8:30-4:30

Appointment necessary? Required

Holdings:

Total volume: 300 cubic feet

Inclusive dates: 1865 – present

Scope and content of holdings/collections: Materials documenting the history of the college from 1865 to the present, including administrative records, 1865 – present; academic departmental records, 1886 – 1975; curriculum materials; student records; financial records, 1865 – 1943, 1978 – 1986; Peirce Alumni Association records, 1892 – present; printed materials; photographs and special media; the Peirce reference collection; and Peirce family papers.

Pennsylvania Academy of the Fine Arts

128 N. Broad Street

Philadelphia PA 19102

Repository established: 1975

Access:

Contact person: Archivist

Telephone: 215-972-2066

Fax: 215-567-2429

E-mail: archives@pafa.org

Web: www.pafa.org/research

Days and hours of operation: Monday-Friday 10:00-4:00

Appointment necessary? Required

Holdings:

Total volume: 500 linear feet

Inclusive dates: 1795 – present

Predominant dates: 1810 – 1976

Scope and content of holdings/collections: Institutional archives of the oldest art museum and school in the country, including student records, exhibition records, and material on the construction of the 1876 National Historic Landmark building by Frank Furness and George Hewitt. Extensive collections of artists' papers, including those of Thomas Eakins, Cecilia Beaux, Daniel Garber, Arthur B. Carles, and several early Philadelphia art organizations.

Pennsylvania Horticultural Society

The McLean Library

100 N. 20th Street

Philadelphia, PA 19103

Repository established: 1827

Access:

Contact person: Information Services Librarian

Telephone: 215-988-8782

Fax: 215-988-8783

E-mail: mcleanlibrary@pennhort.org

Web: www.pennsylvaniahorticulturalsociety.org

Days and hours of operation: Monday-Friday 9:00-5:00

Appointment necessary? Not required

Holdings:

Inclusive dates: 16th century – present

Predominant dates: 1827 – present

Scope and content of holdings/collections: The collection consists of more than 16,000 items on ornamental or amenity horticulture and related topics including: a circulating collection for Society members, over 200 currently received horticulture periodicals and newsletters, bound issues of plant society publications and periodicals, gardening videotapes, nursery and seed catalogs from US mail order nurseries, historic and rare gardening books and seed catalogs from the 16th through 20th century. The Library includes the Pennsylvania Collection which covers the history of horticulture in the Delaware Valley, and the institutional archives of the Pennsylvania Horticultural Society including the Philadelphia Flower Show and Philadelphia Green, an urban greening program.

Pennsylvania Hospital Archives

3 Pine East

800 Spruce Street

Philadelphia, PA 19107

Repository established: 1751

Access:

Contact person: Curator-Lead Archivist

Telephone: 215-829-5434

Fax: 215-829-7155

E-mail: peepless@pahosp.com

Web: www.uphs.upenn.edu/pahosp

Days and hours of operation: Monday-Friday 9:00-4:30

Appointment necessary? Required

Holdings:

Total volume: 13,000+ volumes, 2,500 linear feet

Inclusive dates: 1751 – 1980

Predominant dates: 1751 – 1929

Scope and content of holdings/collections: Archives of the Pennsylvania Hospital have been gathered for nearly 250 years, an almost unbroken series from 1751 to 1980. The collection includes administration and financial records, patient records, photographs and other visual materials, personal papers of hospital practitioners, and artifacts, as well as the records of affiliates absorbed by Pennsylvania Hospital such as the Philadelphia Dispensary, the Preston Retreat, the Southern Dispensary, the Philadelphia Lying-In Charity, the Maternity Hospital, the Nurse Charity, and the Human Society. Also included are the records of the Institute of Pennsylvania Hospital. The Archives is a unique resource for scholars interested in the history of hospital development, health care, medicine, social history, genealogy, mental illness, and architecture.

Pennsylvania State Archives

350 North Street

Harrisburg, PA 17120-0090

Repository established: 1903

Access:

Contact person: Reference

Telephone: 717-783-3281

Fax: 717-787-4822

E-mail: ra-statearchives@state.pa.us

Web: <http://www.phmc.state.pa.us>

Days and hours of operation: Tuesday-Friday 9:00-4:00, Saturday (microfilm only) 9:00-12:00, 1:00-4:00

Appointment necessary? Not required, except for use of restricted materials, video recordings, or unprocessed collections

Holdings:

Total volume: 70,000 cubic feet

Inclusive dates: 1664 – 2005

Predominant dates: 1682 – 1999

Scope and content of holdings/collections: Eighty-three record groups of materials from Pennsylvania's executive, judicial, and legislative branches and from county and local governments. Five hundred and eight manuscript groups of company, organizational, and individual records and papers. Over 30,000 rolls of microfilm of county and local records, State government records, special collections, and Pennsylvania censuses, 1790 – 1930.

Philadelphia Archdiocesan Historical Research Center

100 East Wynnewood Road

Wynnewood, PA 19096-3001

Repository established: 1989

Access:

Contact person: Joseph J. Casino, Director, or Shawn Weldon,
Assistant Archivist

Telephone: 610-667-2125

Fax: 610-667-2730

E-mail: pahrc89@gmail.com

Web: <http://www.rc.net/philadelphia/pahrc/>

Days and hours of operation: Monday-Friday 9:00-4:00

Appointment necessary? Required

Holdings:

Total volume: 2,600 linear feet

Inclusive dates: 1630 – present

Predominant dates: 1800 – present

Scope and content of holdings/collections: Archives of the Roman Catholic Archdiocese of Philadelphia, the American Catholic Historical Society of Philadelphia, and St. Charles Borromeo Seminary. Manuscripts, sacramental records, books, newspapers, journals, pamphlets, photographs, prints, and artifacts pertaining to the history of Catholicism in the United States, particularly the Archdiocese of Philadelphia.

Philadelphia City Archives

3101 Market Street Suite 150

Philadelphia, PA 19104

Repository established: 1952

Access:

Contact person: David Baugh, Archivist II

Telephone: 215-685-9401

Fax: 215-685-9409

E-mail: archives@phila.gov

Web: <http://www.phila.gov/Records/Archives/Archives.html>

Days and hours of operation: 8:30-5:00

Appointment necessary? Not required

Holdings:

Total volume: 20,000 cubic feet

Inclusive dates: 1683 – present

Scope and content of holdings/collections: Philadelphia city and county government records, including records of the Guardians of the Poor, Inspectors of County Prisons, County Commissioners, Board of Health, County Courts, Records of Deeds and other offices of the County of Philadelphia; records of the Mayor, cabinet officers, all departments, bureaus, boards, commissions, and authorities of the City of Philadelphia and records of 28 political subdivisions of the County other than the City of Philadelphia that existed prior to the consolidation of the City and County. The collection also contains records of the United States Centennial Commission, Centennial Board of Finance, and Sesquicentennial Exposition Association.

Philadelphia Contributionship

212 S. Fourth Street

Philadelphia, PA 19106

Repository established: 1975

Access:

Contact person: Archivist

Telephone: 215-627-1752 x1286

Fax: 215-627-8303

E-mail: csmith@contributionship.com

Web: www.contributionship.com

Days and hours of operation: Monday-Friday 8:45-4:15

Appointment necessary? Required

Holdings:

Total volume: 320 linear feet

Inclusive dates: 1752 – present

Predominant dates: 1752 – 1920

Scope and content of holdings/collections: Minutes of the Board of Directors, committee minutes, treasurer's reports, financial ledgers, surveyors' books, other underwriting records. Also, correspondence of directors and treasurers, cancelled policies and surveys of insured dwellings, historical records of other mutual insurance companies, and some records of Philadelphia volunteer fire companies. Also includes Board of Managers minutes for Germantown Mutual Fire Insurance Company and some policyholder minutes.

Philadelphia Jewish Archives Center

125 North 8th Street

6th Floor

Philadelphia, PA 19106

Repository established: 1972

Access:

Contact person: Archivist (Sarah Sherman)

Telephone: 215-925-8090

Fax: 215-925-8186

E-mail: ssherman@philajewisharchives.org

Web: www.philajewisharchives.org

Days and hours of operation: Monday-Thursday 9:00-5:00, Friday 9:00-3:00

Appointment necessary? Required

Holdings:

Total volume: 4,500 linear

Inclusive dates: 1810s – present

Predominant dates: 1900 – present

Scope and content of holdings/collections: The Philadelphia Jewish Archives Center (PJAC) was established in 1972 as a joint project of the Philadelphia Chapter of the American Jewish Committee and the Jewish Federation of Greater Philadelphia. Its mission is to collect, preserve and organize the records of the greater Philadelphia Jewish community (including southern New Jersey and as far west in Pennsylvania as Harrisburg) and make them available to scholars, students, researchers, and the general public. From its inception, it has been the repository for the non-active records of the Jewish Federation. It was the first community sponsored Jewish archives in this country, and was emulated by other Jewish Federations. The Archives Center continually seeks to enhance its service as the central repository of the greater Philadelphia Jewish community's records.

Philadelphia Museum of Art

Box 7646

Philadelphia, PA 19101-7646

Repository established: 1975

Access:

Contact person: Susan K. Anderson, Archivist

Telephone: 215-684-7659

Fax: 215-236-0534

E-mail: skanderson@philamuseum.org

Web: <http://www.philamuseum.org/archives/>

Days and hours of operation: Tuesday-Friday 1:00-4:00

Appointment necessary? Required

Holdings:

Total volume: 1,800 linear feet

Inclusive dates: 1875 – present

Predominant dates: 1925 – present

Scope and content of holdings/collections: The scope of the collection focuses on the history of the Philadelphia Museum of Art. It includes the records of the corporation, directors of the museum, curatorial departments, support departments, and affiliated organizations. The Archives also holds manuscript collections and personal papers of individuals related in some way to the institution, such as Walter and Louise Arensberg, Marcel Duchamp, Fiske Kimball, George Grey Barnard, and Henry P. McIlhenny. For more information, please see our finding aids at www.philamuseum.org/archives/findingaids.html.

Philadelphia Water Department Archives

1101 Market Street, 3rd Floor

Philadelphia, PA 19101

Repository established: 1975

Access:

Contact person: Adam Levine, Consulting Archivist

Telephone: 215-685-4911

E-mail: aelrvpa@hotmail.com

Web: www.phillyh2o.org

Days and hours of operation: Weekdays, by appointment only

Appointment necessary? Required

Holdings:

Total volume: More than 16,000 items catalogued, cataloguing and collection of new material ongoing

Inclusive dates: 1798 – present

Predominant dates: 1850 – 1950

Scope and content of holdings/collections: The Philadelphia Water Department (PWD) Archives is the current repository for all historical information relating to PWD, which began supplying water to Philadelphia in 1801. Besides being the municipal utility in charge of drinking water supply, PWD (since 1952) is also charged with building and maintaining the City's sewerage system, and the collection includes a lesser number of reports and photographs documenting this aspect of work. Besides original material, thousands of related images and documents held by other institutions have been copied with permission and incorporated into the collection. Through the PWD Design Department's Engineering Records database, approved researchers also have access to tens of thousands of historical construction drawings and architectural plans. Collection highlights include roughly 25,000 photographic images (about 13,000 of which are catalogued). Among these are 3,276 glass plate negatives documenting the construction of the City's water filtration system from 1900-1909. (More than 1,500 of these photographs are now available online through www.phillyhistory.org.) The books and pamphlets comprise a near-complete collection of Department reports, the earliest of which dates to 1798.

Please Touch Museum

Memorial Hall, Fairmount Park

4231 Avenue of the Republic

Philadelphia, PA 19131

Repository established: 1976

Access:

Contact person: Curator of Collections

Telephone: 215-578-5163

Web: www.pleasetouchmuseum.org

Days and hours of operation: Monday-Friday 9:00-5:00

Appointment necessary? Required

Holdings:

Total volume: 3,500 linear feet

Inclusive dates: 1870 – 1880, 1900 – present

Predominant dates: 1876, 1982 – present

Scope and content of holdings/collections: The Archives Collection documents the Museum's history from its founding in 1976 to the present. Primary groups are the administrative, public relations, education, and exhibits department records. Manuscript and Photography Collections document child life, with a 20th century emphasis. Additional materials relate to the 1876 Centennial Exhibition (World's Fair), Memorial Hall, and childhood in the 1870s. Significant holdings include the personal records of Tana Hoban (photographer); records, scripts, video, film, and props from Captain Noah and His Magical Ark children's television program (1967 – 1994); John C. Walworth (child-appeal premiums) and Joel Spivak (Star Wars); as well as the Contemporary Toys Manuscript Collection (in cooperation with the Toys Manufacturers of America). Related holdings include child life ephemera and a library of books and periodicals with strengths in child development, education, material culture, and historical and contemporary children's literature.

Pottstown Historical Society

568 High Street

Pottstown, PA 19464

Repository established: 1936

Access:

Contact person: Historian

Telephone: 610-970-7355

E-mail: info@pottstownhistory.org

Web: www.pottstownhistory.org

Days and hours of operation: Second and fourth Sundays of each month 1:00-4:00, and by appointment

Appointment necessary? Required, except for second and fourth Sundays of each month, 1:00-4:00

Holdings:

Inclusive dates: 1716 – present

Predominant dates: 1850s – 1940s

Scope and content of holdings/collections: Collections relate to Pottstown and Montgomery County history and include papers and records relating to the Potts and Rutter families and their iron furnaces; local newspapers; church and cemetery records; census records; city directories; yearbooks; photographs; oral histories; histories of Montgomery, Berks, and Chester Counties; and other materials.

Presbyterian Historical Society

425 Lombard Street

Philadelphia, PA 19147-1516

Repository established: 1852

Access:

Contact person: Deputy Director

Telephone: 215-627-1852

Fax: 215-627-0509

E-mail: refdesk@history.pcusa.org

Web: www.history.pcusa.org

Days and hours of operation: Monday-Friday 8:30-4:30

Appointment necessary? Not required

Holdings:

Total volume: 30,000 cubic feet, 200,000 volumes

Inclusive dates: 1500s – present

Predominant dates: 1780s – present

Scope and content of holdings/collections: The Society is the national archives and historical research center of the Presbyterian Church (USA). Headquartered in Philadelphia with a records management program at the denomination's headquarters in Louisville, KY, it serves the administrative, legal, and historical needs of the church's national agencies, middle governing bodies, and local congregations as well as scholars and the general public. The Society houses the official records of the denomination and predecessor denominations, personal papers of prominent Presbyterians, the records of ecumenical organizations such as the American Sunday School Union and the National Council of the Churches of Christ, and special collections and rare books supporting research in Presbyterian history. Collection emphases include church legal and administrative decisions; religion and life in Colonial America; the American Revolution; the First and Second Great Awakenings; missionary work among Asians, Africans, and Native Americans; the New Republic; the Civil War and Reconstruction; westward expansion; civil rights and other race issues; social justice issues; and ecumenical movements.

Princeton Theological Seminary, Special Collections

25 Library Place

P.O. Box 111

Princeton, NJ 08542

Repository established: 19th century

Access:

Contact person: Curator of Special Collections

Telephone: 609-497-7953

E-mail: Special.Collections@ptsem.edu

Web: <http://libweb.ptsem.edu/collections>

Days and hours of operation: Monday-Friday 9:00-12:00 and 1:00-4:00

Appointment necessary? Preferred

Holdings:

Total volume: 3,500 linear feet of archives and manuscripts, 75,000 books and pamphlets

Inclusive dates: 2000 BCE – present

Predominant dates: 1700 – present

Scope and content of holdings/collections: Special Collections houses manuscript materials relating to the history of the Princeton Theological Seminary and the American Presbyterian Church. It is also the repository for the papers of such organizations as the Academy of Homiletics, the American Society of Christian Ethics, the American Theological Society, the Consultation on Church Union, the Karl Barth Society of North America, and the Committees on the Revised Standard and New Revised Standard Versions of the Bible. Other important collections include a substantial number of cuneiform tablets; 16th-century theological literature (especially German and Swiss); the Sprague Collection of more than 20,000 theological pamphlets and tracts published in the 18th and early 19th century in North America; the Louis F. Benson Hymnology Collection (10,000 volumes); the Grosart Library of Puritan and Nonconformist Literature (5,000 volumes); and the Moffett Korea Collection of manuscript and printed resources relating especially to the history of Protestant missions in Korea. The Abraham Kuyper Collection of Dutch Reformed Protestantism (15,000 volumes) and the Karl Barth Collection (all of Swiss theologian Karl Barth's published works plus an extensive collection of secondary literature in most major European languages, microfilms of manuscript materials from his Basel archive, and the papers of his son, Markus Barth) are also available at our repository.

Princeton University Archives, Seeley G. Mudd Manuscript Library

65 Olden Street

Princeton, NJ 08540

Repository established: 1976

Access:

Contact person: Dan Linke, University Archivist and Curator of Public Policy Papers

Telephone: 609-258-6345

Fax: 609-258-3385

E-mail: mudd@princeton.edu

Web: <http://www.princeton.edu/mudd>

Days and hours of operation: Monday-Friday 9:00-5:00, Wednesdays until 7:45 PM

Appointment necessary? No

Holdings:

Total volume: Circa 30,000 linear feet

Inclusive dates: 1748 – present

Predominant dates: 1900 – 2008

Scope and content of holdings/collections: The Seeley G. Mudd Manuscript Library, a division of the Department of Rare Books and Special Collections, is a state-of-the-art repository constructed in 1976 to house the Princeton University Archives and a highly regarded collection of 20th century public policy papers. The 30,000 linear feet of archival and manuscript material in its possession are widely used by local, national, and international researchers. A vigorous processing program, the exploitation of new technologies, and an emphasis on public service have ensured that Mudd Library's collections are ever more accessible and usable.

Radnor Historical Society

113 West Beech Tree Lane

Wayne, PA 19087

Repository established: 1948

Access:

Contact person: Ted Pollard, President

Telephone: 610-688-2668

E-mail: president@radnorhistory.org

Web: www.radnorhistory.org

Days and hours of operation: Tuesdays and Saturdays 2:00-4:00 and by appointment

Appointment necessary? Required, except Tuesdays and Saturdays 2:00-4:00

Holdings:

Total volume: About 300 volumes and 5,000-6,000 photographs

Inclusive dates: 1800 – present

Predominant dates: 1880 – 1930

Scope and content of holdings/collections: Most materials pertain to Radnor history, with some pertaining to Delaware County history, and a smattering pertaining to surrounding counties. The strength of the collection is the photographs. In addition there is an extensive collection of documents pertaining to all aspects of life in Radnor from mid-18th century tax records to the present.

Rosemont College

1400 Montgomery Avenue

Rosemont, PA 19010

Repository established: 1991

Access:

Contact person: Archivist

Telephone: 610-527-0200x2208

E-mail: archives@rosemont.edu

Web: www.rosemont.edu

Days and hours of operation: By appointment only

Appointment necessary? Required

Holdings:

Inclusive dates: 1921 – present

Scope and content of holdings/collections: The Rosemont College Archives resides in the Gertrude Kistler Memorial Library on campus. The collection primarily reflects the history of the undergraduate women's college dating from 1921, the year the college was founded by the Society of the Holy Child Jesus. Of special interest are the handwritten daily journals prepared by the Sisters, dating from 1921 to 1968. The collection includes documents relating to the history of the college, publications, photographs, and some audio/visual materials. Although men as well as women have matriculated in the Graduate and Professional Studies for some years, the undergraduate college will go co-ed beginning in the fall of 2009.

Rosenbach Museum and Library

2008-2010 Delancey Place

Philadelphia PA 19103

Repository established: 1954

Access:

Contact person: Librarian

Telephone: 215-732-1600 x115

Fax: 215-545-7529

E-mail: eefuller@rosenbach.org

Web: www.rosenbach.org

Days and hours of operation: Monday 10:30-12:30, 1:30-6:00,
Thursday-Friday 9:30-12:30, 1:30-4:30

Appointment necessary? Required

Holdings:

Total volume: 2,370 linear feet

Inclusive dates: 11th – 20th centuries

Predominant dates: 1500 – 1970

Scope and content of holdings/collections: Collections include more than 30,000 books, 300,000 pages of manuscripts and letters, 20,000 works of art on paper, and collections of paintings, photographs, furniture, porcelain, glass, sculpture, and silver. Collections are particularly strong in Americana. Important manuscript holdings include Spanish-American documents; letters of Washington (more than 100, including his earliest extant letter), Franklin, Adams and Jefferson; Commodore Barry's papers outlining the beginning of the American navy; the Rush-Williams-Biddle family papers; over 60 letters and documents by Lincoln; 80 war-time letters by Grant and his draft telegram announcing Lee's surrender. British and American literature collections include 15th-century manuscripts, including texts of Chaucer's *Canterbury Tales*; manuscripts and papers of Boswell, Burns, Scott, Wordsworth, Lamb, Keats, Shelley, Dickens, Lewis Carroll, Dylan Thomas, Stoker, Conrad, and Joyce; the papers, working library, and living room of poet Marianne Moore; and the manuscripts and original illustrations of Maurice Sendak. The Rosenbach Company Archives are an important resource for the history of the American rare book trade.

Rutgers University Libraries, Special Collections and University Archives

169 College Avenue

New Brunswick, NJ 08901-1163

Repository established: 1946

Access:

Contact person: Ronald L. Becker, Head

Telephone: 732-932-7006x362

Fax: 732-932-7012

E-mail: rbecker@rci.rutgers.edu

Web: <http://www.libraries.rutgers.edu/rul/libs/scua/scua.shtml>

Days and hours of operation: Monday-Friday 9:00 -5:00, Saturday 1:00-5:00 (during the academic year)

Appointment necessary? Not required

Holdings

Total volume: 15,000 cubic feet

Inclusive dates: 16th century – present

Predominant dates: 18th century – present

Scope and content of holdings/collections: Major collecting areas are: manuscripts (2,000 collections - New Jersey history and society); genealogy and family history; 19th-century Westerners in the Orient; British writers; business, labor, technology, women's studies, social welfare, and social policy; 20th-century American politicians; 20th-century consumer thought and action; 20th-century Latin American politics and society; rare books (wide subject and chronological range); Sinclair New Jersey Collection (state and local history library); University Archives.

Saint Joseph's University Archives and Special Collections

Francis A. Drexel Library

5600 City Avenue

Philadelphia, PA. 19131-1395

Repository established: 1987

Access:

Contact person: Christopher O. Dixon, Archives Research/Reference Librarian

Telephone: 610-660-1903

Fax: 610-660-1916

E-mail: cdixon@sju.edu, mcavinue@sju.edu

Web: <http://www.sju.edu/libraries/drexel/archive/index.htm>

Days and hours of operation: Monday-Friday 9:00-5:00

Appointment necessary? Required

Holdings:

Total volume: 548 linear feet

Inclusive dates: 1850s – present

Predominant dates: 1927 – present

Scope and content of holdings/collections: Includes information and copies of documentation on the history of Saint Joseph's University (College); relationships with the early Jesuits in Philadelphia at Old Saint Joseph's Church; institutional records; anniversary celebration records; files of noted alumni, including the Thomas M. Foglietta Collection; documents of the Comey Institute of Industrial Relations; faculty, student and campus publications; Jesuit information; photographs, audio-visual materials; newspaper clippings; memorabilia; ephemera.

Salem County Historical Society

79-83 Market Street

Salem, NJ 08079

Access:

Contact person: Librarian

Telephone: 856-935-5004

E-mail: info@salemcountyhistoricalsociety.com

Web: <http://www.salemcountyhistoricalsociety.com>

Days and hours of operation: Tuesday-Saturday 12:00-4:00

Appointment necessary? Not required

Holdings:

Scope and content of holdings/collections: Deeds (17th – 20th century, unrecorded and recorded), surveys and survey maps (17th – 20th century), legal documents (1674 – 1941), diaries and journals (17th – 20th century), Quaker records (17th – 20th century), business and organization records (18th – 20th century), church and cemetery records (18th – 20th century), US census records (1830 – 1920), Salem County newspapers (microfilm; 19th – 20th century), photography

collections (19th – 20th century), Koehler-Morton Genealogy Collection indexed scrapbooks (19th – 20th century), maps (18th – 20th century), directories (19th – 20th century), family files (genealogies, Bible records, photographs), family indexes (marriages deaths), subject files of local topics, secondary sources including ship passenger lists, vital statistics, wills, court records, Publications of the New Jersey Archives, New Jersey Historical Society, New Jersey Genealogical Society, Genealogical Society of Pennsylvania, Historical Society of Pennsylvania, Friends Historical Society, Holland Society of New York.

Sisters of St. Francis of Philadelphia Archives

Our Lady of Angels Convent

609 South Convent Road

Aston, PA 19014-1207

Repository established: 1937

Access:

Contact person: Congregational Archivist

Telephone: 610-558-7708

Fax: 610-558-5357

E-mail: [hjacobson@osfphila.org](mailto:hjacobsn@osfphila.org)

Web: www.osfphila.org

Days and hours of operation: Monday-Friday 8:00-4:00

Appointment necessary? Required

Holdings:

Total volume: 225 linear feet

Inclusive dates: 1855 – present

Predominant dates: 1947 – 1989

Scope and content of holdings/collections: Various records pertaining to the history, spirit, life, and ministries of the Sisters of St. Francis of

Philadelphia including correspondence, mission histories, internal publications, and photographs.

Sisters of the Blessed Sacrament

1663 Bristol Pike

Bensalem, PA 19020-5796

Repository established: 1970

Access:

Contact person: Director of Archives

Telephone: 215-244-9900x352

Fax: 215-244-8174

E-mail: sbsarchives@aol.com

Web: www.katharinedrexel.org

Days and hours of operation: Monday-Friday 9:00-12:00, 1:00-4:00

Appointment necessary? Required

Holdings:

Total volume: 1,000 linear feet

Inclusive dates: 1858 – present

Predominant dates: 1891 – 1991

Scope and content of holdings/collections: Approximately 9,000 letters of foundress Mother Katharine Drexel including family correspondence, religious men and women working among African-American and Native American people, and government officials. Family correspondence includes letters with Anthony J. Drexel and Congressman Edward Morrell. Sisters of the Blessed Sacrament correspondence involved in work among Native Americans and African-Americans. Annals of the Congregation and of mission sites. Historical materials on church architecture, African and Native American culture.

Society of the Holy Child Jesus - American Province Archives

1308 Wendover Road

Rosemont, PA 19010

Repository established: 2000

Access:

Contact person: Archivist

Telephone: 610-525-8951

Fax: 610-525-8952

E-mail: hmayer@shcj.org

Web: www.shcj.org

Days and hours of operation: Monday-Friday 9:00-4:00

Appointment necessary? Required

Holdings:

Inclusive dates: 1860 – present

Scope and content of holdings/collections: Journals and diaries of schools and convents of this religious order; papers concerned with history, government, education, apostolates, missions; photographs of foundations, sisters, communities; library of biographies of foundress and sisters; individual sisters' writings and fine arts by sisters; artifacts and furniture of closed works.

Soroptimist International of the Americas

The Soroptimist Archives

1709 Spruce Street

Philadelphia, PA 19103

Repository established: 1993

Access:

Contact person: Archivist

Telephone: 215-893-9000

Fax: 215-893-5200

E-mail: siahq@soroptimist.org

Web: www.soroptimist.org

Days and hours of operation: Monday-Friday 9:00-5:00

Appointment necessary? Required

Holdings:

Total volume: 300 linear feet

Inclusive dates: 1921 – 2008

Predominant dates: 1960 – 2008

Scope and content of holdings/collections: The Soroptimist Archives holds the institutional archives of Soroptimist International of the Americas, an international women's organization. The archives also holds numerous manuscript and oral history collections documenting former organization leaders. The archives consists of approximately 300 linear feet of material, including founding documents, Board of Directors records, communication and public relations, convention, membership, finance, anniversary, administration, and program records. The archives holds the only known complete run of the organizational magazine, under three different titles since 1930. Also included are laws and resolutions, club and region histories, photographs, audio/visual materials, artifacts and ephemera.

St. Vincent's Seminary - Ducournau Archives of the Eastern Province of the Congregation of the Mission

500 East Cheltenham Avenue

Philadelphia, PA 19144

Repository established: 1996

Access:

Contact person: Provincial Archivist

Telephone: 215-713-2434

Fax: 215-848-5074

E-mail: DucArccm@cmphlsvs.org

Days and hours of operation: Monday-Friday 10:00-4:00

Appointment necessary? Required

Holdings:

Inclusive dates: 1625 – present

Predominant dates: 1888 – present

Scope and content of holdings/collections: Material pertinent to the foundation/founder of the Congregation of the Mission: biographies, printed letters, conferences and documents of the founder; microfilm of the archives of the Motherhouse in Paris; various publications emanating from the Motherhouse, for example, histories of Provinces, catalogue of personnel world-wide. Material pertinent to the foundation of the Congregation of the Mission in the USA (1816): microfilm of correspondence with Superior General; catalogue of personnel; some historical monographs. Material pertinent to the Eastern Province founded in 1888: personnel, houses, works, correspondence.

Swarthmore College Peace Collection

500 College Avenue

Swarthmore, PA 19081-1399

Repository established: 1930

Access:

Contact person: Curator

Telephone: 610-328-8557

Fax: 610-328-8544

E-mail: wchmiel1@swarthmore.edu

Web: www.swarthmore.edu/Library/peace

Days and hours of operation: Monday - Friday 8:30-4:30, Saturday (when Swarthmore is in session) 10:00-1:00

Appointment necessary? Not required

Holdings:

Total volume: 14,000 volumes, 15,000 linear feet

Inclusive dates: 1642 – present

Predominant dates: 1815 – present

Scope and content of holdings/collections: Collection holds material on the history of the peace movement, conscientious objection, pacifism, arms control and disarmament, nonviolence, internationalism, civil disobedience, progressivism, the Vietnam era, black protest, feminism, civil liberties, the history of social work, women and peace related reform movements. Receives, on an ongoing basis, records from many organizations and papers from many individuals. Also seeks to obtain books and pamphlets written about the peace movement, including newsletters, journals, and other periodicals. Graphics include a large collection of posters. Collections also hold photographs and memorabilia.

Temple University - Charles L. Blockson Afro-American Collection

1st Floor, Sullivan Hall

1330 West Berks Mall

Philadelphia, PA 19122

Repository established: 1984

Access:

Contact person: Dr. Diane Turner, Curator

Telephone: 215-204-6632

Fax: 215-204-5197

E-mail: ddturner@temple.edu

Web: www.library.temple.edu/collections/blockson

Days and hours of operation: Monday-Friday 9:00-5:00

Appointment necessary? Recommended

Holdings:

Total volume: Over 500,000 books and other materials

Inclusive dates: 1600 – present

Predominant dates: 19th century – present

Scope and content of holdings/collections: The Charles L. Blockson Afro-American Collection is a unit of Temple University Libraries. It's mission is to collect, preserve and provide access to resources documenting the experiences of peoples of African descent throughout the world with emphasis on Blacks in the United States of America. The Collection includes books, pamphlets, periodicals, newspapers, performance programs, posters, prints, maps, photographs, manuscripts and artifacts.

Temple University - Urban Archives

Paley Library - 017-00

1210 West Berks Street

Philadelphia, PA 19122

Repository established: 1967

Access:

Contact person: Head, Urban Archives

Telephone: 215-204-5750

Fax: 215-204-3681

E-mail: urban@www.library.temple.edu

Web: www.library.temple.edu/urbana

Days and hours of operation: Monday-Friday 8:30-5:30, Saturdays by appointment only

Appointment necessary? Not required

Holdings:

Total volume: 11,500 linear feet of manuscripts, 8,900 linear feet of photos, 2,850 linear feet of clippings, 650 linear feet of monographs

Inclusive dates: 1890 – present

Predominant dates: 1930 – 1983

Scope and content of holdings/collections: The Urban Archives documents the social, economic, and physical development of the Philadelphia metropolitan area since the mid-nineteenth century. In addition to the George D. McDowell Philadelphia Evening Bulletin photojournalism collection, which includes some Inquirer images, and the Bulletin clipping morgue as well as Bulletin photographs, collections include records of the Housing Association of the Delaware Valley, Octavia Hill Association, City Parks Association; a wide range of city-wide and coordinating agencies, service agencies and neighborhood centers; collections concerning the care of children and mothers; records of neighborhood based social service agencies; trade group papers; records of local community groups, ethnic organizations (the Afro-American community is best represented), educational, legal, and political groups; and film footage from local television stations WPVI-TV (Channel 6) and KYW-TV (CBS3).

Temple University – Special Collections

Paley Library – 017-00

1210 West Berks Street

Philadelphia, PA 19122

Repository established: 1967

Access:

Contact person: Head, Special Collections

Telephone: 215-204-8230

Fax: 215-204-5201

E-mail: thomas.whitehead@temple.edu

Web: http://library.temple.edu/collections/special_collections

Days and hours of operation: Monday-Friday 8:30-5:30

Appointment necessary? Not required

Holdings:

Total volume: 10,000 linear feet, 100,000 books/catalogues/pamphlets

Inclusive dates: 1200 BC – present

Predominant dates: 1920 – 2000

Scope and content of holdings/collections: The Department consists of five active units: Rare Books & Manuscripts Collection (holding the general manuscript collection of the Temple Libraries; strong holdings in business history, printing and publishing, literary archives); Conwellana-Templana Collection, the “University Archives” (Temple organizational, faculty and alumni archives and Russell H. Conwell Papers); Contemporary Culture Collection (social/political protest and alternative publications and archives from the Vietnam Conflict to date); the Philadelphia Dance Collection (regional dance company archives and dance documentation programs); and the Science Fiction and Fantasy Collection (books, pulp magazines, fanzines and authors’ papers). All units collect in all formats of printed and manuscript materials. Portions of holdings have begun to be located off-site and would require advance notice for use. Significant holdings remain uncatalogued but can be checked within the Department.

Thomas Jefferson University

Archives and Special Collections, Scott Memorial Library

1020 Walnut Street, Room 401

Philadelphia PA 19107

Repository established: 1975

Access:

Contact person: University Archivist and Special Collections Librarian

Telephone: 215-503-8097

Fax: 215-923-3203

E-mail: Michael.Angelo@jefferson.edu

Web: <http://jeffline.tju.edu/SML/Archives/>

Days and hours of operation: Call for hours

Appointment necessary? Recommended

Holdings:

Total volume: 2,500 cubic feet, 5,000 volumes, rare books and special collections

Inclusive dates: 15th century – present

Predominant dates: 1880 – present

Scope and content of holdings/collections: Official records of Thomas Jefferson University corporation, the Board of Trustees and various colleges (Jefferson Medical College, College of Graduate Studies, College of Allied Health Sciences) of the Health Sciences Division and Thomas Jefferson University Hospital; private papers, manuscripts, artifacts and memorabilia of University presidents, faculty, staff and alumni; rare and/or historical books and publications documenting the history of medicine; and Jeffersoniana - publications written or edited by Jefferson faculty, staff, or alumni.

Trenton Public Library

Trentoniana Collection

120 Academy Street

Trenton, NJ 08608

Repository established: 1900

Access:

Contact person: Historian

Telephone: 609-695-7048x20

Fax: 609-396-7655

E-mail: gref@trentonlib.org

Web: <https://trentonlib.org/Cit-e-Access/webpage.cfm?TID=92&TPID=9353>

Days and hours of operation: Monday by appointment only; Tuesday, Wednesday, Friday 9:00-5:00; Thursday 1:30-9:00; third Saturday of every month, call for hours

Appointment necessary? Only required on Monday

Holdings:

Scope and content of holdings/collections: The main branch of the Trenton Public Library is home to Trentoniana, an enormous local history and genealogy collection. Trentoniana's holdings include photographs, manuscripts, scrapbooks, trade cards, postcards, diaries, and maps that help researchers explore the rich history of Trenton, New Jersey. Trentoniana's collection includes the most extensive representation of Trenton histories, books, monographs, serials, scrapbooks, periodicals, and pamphlets. A significant portion of this collection consists of local newspapers (most on microfilm) printed in Trenton from 1977 to the present. Several indices to parts of the collection are available.

Union League of Philadelphia

Archives

140 South Broad Street

Philadelphia, PA 19102

Repository established: 1961

Access:

Contact person: Director of Library and Historical Collections

Telephone: 215-587-5592

Fax: 215-851-8796

E-mail: mundyj@unionleague.org

Web: www.unionleague.org

Days and hours of operation: Monday-Friday 9:00-5:00

Appointment necessary? Required

Holdings:

Total volume: 1,000 linear feet

Inclusive dates: 1862 – present

Scope and content of holdings/collections: The Archive's holdings reflect the history of the League and its members from 1862 to the present, in the form of manuscript and archives material, photographs, prints and the ephemera generated by the activity of the club. Included in the archives is a small but fascinating 3-D collection, minute books, annual reports, and architectural drawings.

University of Delaware Library - Special Collections

181 South College Avenue

Newark, DE 19717-5267

Access:

Contact person: Head of Special Collections

Telephone: 302-831-2229

Fax: 302-831-1046

E-mail: www.lib.udel.edu/cgi-bin/askspec.cgi

Web: <http://www.lib.udel.edu/ud/spec/>

Days and hours of operation: Monday, Wednesday-Friday 9:00-5:00,
Tuesday 9:00-8:00

Appointment necessary? Not required

Holdings:

Total volume: 3,000+ linear feet, 100,000 volumes

Inclusive dates: 15th century – present

Scope and content of holdings/collections: Books, manuscripts, maps, prints, photographs, broadsides, periodicals, pamphlets, ephemera and realia from the 15th century to present. The collections complement the Library's general collections with particular strengths in the subject areas of fine, decorative, and applied arts; English, Irish, and American literature; history and Delawareana; horticulture;

history of sciences and technology; and history of printing and the book arts.

University of Delaware - University Archives and Records Management

002 Pearson Hall

Newark, DE 19716

Repository established: 1969

Access:

Contact person: Ian Janssen, Director

Telephone: 302-831-2750

Fax: 302-831-6903

E-mail: ud-archives@udel.edu

Web: www.udel.edu/Archives

Days and hours of operation: Monday-Friday 8:00- 5:00

Appointment necessary? Required

Holdings:

Total volume: 10,000 cubic feet and approximately 18,000 volumes

Inclusive dates: 1834 – present

Predominant dates: 1920 – 1960

Scope and content of holdings/collections: Official records, photographs, publications, and memorabilia documenting the history of the University of Delaware.

University of Pennsylvania - Architectural Archives

220 South 34th Street

Meyerson Hall 102

Philadelphia, PA 19104-6311

Repository established: 1978

Access:

Contact person: Curator

Telephone: 215-898-8323

Fax: 215-573-4032

E-mail: wwhitake@design.upenn.edu

Web: www.upenn.edu/gsfa/archives/archives

Days and hours of operation: Monday-Friday 10:00-5:00

Appointment necessary? Required

Holdings:

Total volume: 15,000 cubic feet

Inclusive dates: 1681 – present

Predominant dates: 1920 – 1995

Scope and content of holdings/collections: Holdings comprise architectural design records, including architectural drawings, photographs, architectural models, office files, and personal papers of approximately 400 designers in architecture, landscape architecture, engineering, and related arts from the late 17th century to the present. Major collections of international importance include the Louis I. Kahn Collection, the Lawrence Halprin Collection and the recently acquired Venturi, Scott Brown Collection. Other major American designers represented in the collection include Alfred Bendiner, Cope and Stewardson, Paul Philippe Cret, Frank Miles Day, Wilson Eyre, Frank Furness, Edmund Gilchrist, Warren Power Laird, Mitchell/Giurgola, John Nolen, Frank Lloyd Wright, Samuel Yellin, and Zantzing Borie and Medary. European architects include Friedrich Weinbrenner (the most important archive of this architect's work outside of Europe), Robert Adam, Gilbert Blount, William Butterfield, and William Chambers. The innovative engineering studies of G. Robert Le Ricolais are represented by an extensive collection of calculations, drawings, and forty structural models.

**University of Pennsylvania - Library at the Herbert D. Katz
Center for Advanced Judaic Studies**

420 Walnut Street

Philadelphia PA 19106-3703

Repository established: 1907

Access:

Contact person: Public Services Librarian and Archivist

Telephone: 215-238-1290 x206

E-mail: cajs@pobox.upenn.edu

Web: <http://www.library.upenn.edu/cajs/>

Days and hours of operation: Monday-Friday 9:00–4:00

Appointment necessary? Required

Holdings:

Total volume: 850 linear feet

Inclusive dates: 1784 – present

Predominant dates: 1850 – 1950

Scope and content of holdings/collections: The Library holds approximately 200,000 volumes, including 32 incunabula (17 Hebrew and 15 Latin) and over 8,000 rare printed works, mainly in Hebrew, English, German, French, Yiddish, Arabic, Latin, and Ladino. The rare Hebrew editions offer specimens from a variety of Hebrew printing houses around the world; particularly strong are holdings of early modern rare books printed on the Italian peninsula, including nearly 20 percent of all Venetian Hebrew imprints. The CAJS Library special collections of non-print materials include 453 codices written in eleven different alphabets as well as in twenty-four different languages and dialects as varied as Armenian, Hebrew, Judeo-Arabic, Syriac, Yiddish and Telugu, a collection of ancient artifacts dating from circa 2500 BCE, and nearly 600 medieval manuscript fragments from the Cairo Genizah. The archives holds the institutional records of Dropsie College, its faculty, students, and library, the professional papers of some of its faculty, as well as the personal papers of over fifty Jewish

American scholars and community leaders who lived in Philadelphia during the late 19th and early 20th centuries. Among them are the papers of Isaac Leeser, Sabato Morais, Mayer Sulzberger, Moses Aaron Dropsie, and Cyrus Adler. There are two significant Yiddish archival collections: the papers of B.Z. Goldberg and Elias Schulman.

University of Pennsylvania - Morris Arboretum Library

100 Northwestern Ave.

Philadelphia, PA 19118

Repository established: 1985

Access:

Contact person: Director of Public Programs

Telephone: 215-247-5777

Fax: 215-248-4439

E-mail: gutowski@exchange.upenn.edu

Days and hours of operation: By appointment

Appointment necessary? Required

Holdings:

Total volume: 6,000 items

Inclusive dates: 1790 – present

Predominant dates: 1890 – present

Scope and content of holdings/collections: Site and family history related to John and Lydia Morris, botanical art and science, Victorian concentration, landscape history. Arboretum administrative manuscripts, newsletters, and ephemera, maps and photographs of the site from 1888 – 1990.

University of Pennsylvania - University Archives and Records Center

North Arcade, Franklin Field
Philadelphia, PA 19104-6320

Repository established: 1945

Access:

Contact person: Public Services Archivist

Telephone: 215-898-7025

Fax: 215-573-2036

E-mail: uarc@pobox.upenn.edu

Web: www.archives.upenn.edu

Days and hours of operation: Monday-Friday 9:30-4:30

Appointment necessary? Not required

Holdings:

Total volume: 14,000 cubic feet

Inclusive dates: 1749 – present

Predominant dates: 1850 – present

Scope and content of holdings/collections: Includes academic and administrative records of the University; materials that document the life of the University community, including student activities, alumni organizations, organizations of faculty and administrators; personal and professional papers of prominent people associated with the University; and papers of individuals and organizations where the subject matter of the collection is particularly relevant to the history of the University. Formats include a 2,500 volume reference collection, archival and manuscript collections, 25,000 visual items, 150 cubic feet of University decorative arts and memorabilia, and 450 current and retrospective serial titles (exclusively University and University-related publications).

University of Pennsylvania Museum Archives

3260 South Street

Philadelphia, PA 19104-6324

Repository established: 1981

Access:

Contact person: Alessandro Pezzati, Archivist

Telephone: 215-898-8304

Fax: 215-898-0657

E-mail: apezzati@sas.upenn.edu

Web: <http://www.museum.upenn.edu/>

Days and hours of operation: Tuesday-Friday 9:30-4:30

Appointment necessary? Required

Holdings:

Total volume: 2,500 linear feet of textual records, manuscripts, and news clippings; 3,000 books, bound volumes, and periodicals; 6,000 drawings, plans, works of art on paper, and paintings (paintings comprise only a small portion of this number); 750,000 audiovisual collections (including negatives, both glass plate and film; photographic prints; 35mm slides; glass lantern slides; motion picture films; digital images; and sound recordings).

Inclusive dates: 1820 – present

Predominant dates: 1887 – present

Scope and content of holdings/collections: The Archives of the University of Pennsylvania Museum is the central repository for textual and visual records created by the institution. The archival collections are particularly noteworthy for the documentation they provide regarding the Museum's artifact collections, since so many of the artifacts were obtained through expeditions sponsored by this institution. The collections of the Museum Archives comprise administrative records of Museum departments, including the Office of the Director, the Public Information Office, the Exhibits

Department, the Building Superintendent, the Education Department, and others; records generated from the Museum's anthropological and archaeological expeditions around the world; the personal and professional papers of Museum curators and researchers; and certain papers of outside individuals and organizations when the subject matter of the collection is relevant to Museum history. The archival materials consist of letters and memoranda, field notes, catalogs and object ledgers, notebooks, journals, diaries, drawings, maps, plans, photographs, and motion picture films.

**University of Pennsylvania School of Nursing - Barbara Bates
Center for the Study of the History of Nursing**

Claire M. Fagin Hall, Room 2011 U

418 Curie Boulevard

Philadelphia, PA 19104-4217

Repository established: 1985

Access:

Contact person: Curator

Telephone: 215-898-4502

Fax: 215-573-2168

E-mail: nhistory@nursing.upenn.edu

Web: <http://www.nursing.upenn.edu/history/>

Days and hours of operation: Monday-Friday 9:00-5:00

Appointment necessary? Recommended

Holdings:

Total volume: 1,225 linear feet of archival and manuscript materials, 5,000 photographs, 1,000 books and other printed items

Inclusive dates: 1856 – present

Predominant dates: 1890 – present

Scope and content of holdings/collections: History of nursing, with emphasis on the Mid-Atlantic region of the US. Special Collections:

Archival and manuscript collections including records of hospitals, schools of nursing, nursing alumni associations, voluntary non-profit associations, professional associations, and military associations; personal papers of individual practitioners, nurse historians, and nursing researchers. Holdings include institutional records for Philadelphia General Hospital and Mercy-Douglass Hospital schools of nursing; Visiting Nurse Society of Philadelphia archives and photographic images (3,000); textbooks, manuals, and histories (1,000 volumes).

University of Pennsylvania, Rare Book & Manuscript Library

3420 Walnut Street,

6th floor

Philadelphia, Pennsylvania 19104-6206

Repository established: circa 1946

Access:

Contact person: Nancy Shawcross, Curator of Manuscripts

Telephone: 215-898-2065

Fax: 215-573-9079

E-mail: shawcros@upenn.edu

Web: <http://www.library.upenn.edu/rbm/>

Days and hours of operation: Monday-Friday 9:00-4:45, Saturdays (when classes are in session) 12:00-4:00

Appointment necessary? Recommended

Holdings:

Total volume: approximately 11,000 linear feet of manuscripts

Inclusive dates: 1000 AD – present

Predominant dates: 1400 AD – present

Scope and content of holdings/collections: The Rare Book & Manuscript Library possesses over 125 manuscripts dating from before 1400. They include codices, fragments, and unbound

documents. The bulk relate to religion and the Roman Catholic Church, in particular, liturgy and devotions; theology and doctrine; and ecclesiastical administration. Holdings also include many works of philosophy and literature, as well as many documents concerned with official and legal matters, property, and finances. The majority of Penn's medieval manuscripts originate in Italy and France and are written in Latin. Over 1,300 codices and archival collections dating from the 15th through the middle of the 18th centuries comprise the library's Renaissance and early modern manuscript holdings. Most are European in origin, particularly from Italy, France, and Germany; several items are from the Middle East, North Africa, and the newly-colonized Americas. Regarding modern manuscripts, the Rare Book & Manuscript Library is strongest in the field of American Studies. Regarding American Studies, it is strongest in the fields of 20th century literature and the arts in the greater Philadelphia area. Several important collections, however, can be found relating to American political and social history, as well as the history of science, technology, and industry from the Revolutionary War through the 20th century. The University of Pennsylvania possesses a collection of almost 3,000 Indic manuscripts, the largest in the Western hemisphere. The material is almost all from India, but a few items are from Burma, Siam, Ceylon, and Tibet. The language of most of the manuscripts is Sanskrit, and the works are almost entirely connected with Hinduism (or Brahmanism). Written generally on paper (although a few are on palm leaf), the manuscripts date from the middle of the 15th century through the 18th century.

University of Pennsylvania Law School - Biddle Law Library Archives

3460 Chestnut Street

Biddle Law Library

Philadelphia, PA 19104-3406

Repository established: 1992

Access:

Contact person: C. Jordon Steele, Archivist

Telephone: 215-898-5011

Fax: 215-898-6619

E-mail: steelej@law.upenn.edu

Web: <http://www.law.upenn.edu/bll/archives/>

Days and hours of operation: Monday-Friday 9:00-5:00

Appointment necessary? Required

Holdings:

Total volume: 2,000 linear feet of records and manuscripts, 6,000 rare books

Inclusive dates: 1450 – present

Predominant dates: 1920 – present

Scope and content of holdings/collections: The Biddle Law Library Archives manages the archives of outside legal organizations, papers of individuals affiliated with the Law School, some Law School records, and the Rare Books Collection.

University of the Arts

University Archives

320 South Broad Street

Philadelphia, PA 19102

Repository established: 1876

Access:

Contact person: Public Services Librarian

Telephone: 215-717-6282

Fax: 215-717-6287

E-mail: smacdonald@uarts.edu

Web: <http://library.uarts.edu>

Days and hours of operation: Monday-Friday 9:00-5:00

Appointment necessary? Required

Holdings:

Total volume: 200 linear feet

Inclusive dates: 1870 – present

Scope and content of holdings/collections: The University of the Arts University Libraries hold the archives of the various institutions that merged over the years to form the current university. These include: Philadelphia Colleges of the Arts, Philadelphia College of Art, Philadelphia Museum College of Art, Philadelphia Museum School of Art, Philadelphia Museum School of Industrial Art, Philadelphia Musical Academy, Philadelphia Conservatory of Music, and Philadelphia Dance Academy. The archival holdings consist primarily of school catalogs, annual reports, and commencement programs, a few yearbooks, and some university-produced student publications.

University of the Sciences in Philadelphia

J.W. England Library, Archives

4200 Woodland Avenue

Philadelphia, PA 19104

Repository established: 1821

Access:

Contact person: Library Director

Telephone: 215-596-8791

Fax: 215-596-8760

E-mail: c.myers@usp.edu

Web: <http://www.usp.edu/library/>

Days and hours of operation: Monday-Friday 9:00-5:00

Appointment necessary? Required

Holdings:

Total volume: 250 linear feet

Inclusive dates: 1821 – present

Scope and content of holdings/collections: The University archives holds materials on the development of the profession of pharmacy in the United States, as well as on the history of the institution. Also in the collection are botanicals from the 18th century.

Ursinus College

Archives, Myrin Library

601 East Main Street

Collegeville, PA 1942

Repository established: 1970

Access:

Contact person: Curator

Telephone: 610-409-3000x2877

Fax: 610-489-0634

E-mail: cweigelt@ursinus.edu

Web: myrin.ursinus.edu/archives/about/welcome.htm

Days and hours of operation: Monday, Tuesday, Wednesday, Friday
9:30-1:00

Appointment necessary? Required

Holdings:

Scope and content of holdings/collections: Holdings include the J.H.A. Bomberger Collection (sermons and letters of the College founder and German Reformed clergyman); the Becker Sermon Collection (sermons delivered by German Reformed clergyman Christian Ludwig Becker, 1781 – 1818); papers of James I. Good, Huntington Wilson, Katherine Milhous, and Linda Grace Hoyer Updike. Also includes the Pennsylvania Folklife Archives and the Ursinusiana Collection.

Villanova University

University Archives - Falvey Memorial Library

800 Lancaster Avenue

Villanova, PA 19085-1683

Repository established: 1960

Access:

Contact person: University Archivist

Telephone: 610-519-4133

E-mail: dennis.gallagher@villanova.edu

Web: www.library.villanova.edu

Days and hours of operation: Monday-Friday 9:00- 5:00

Appointment necessary? Required

Holdings:

Inclusive dates: 1842 – present

Predominant dates: 1900 – present

Scope and content of holdings/collections: The Villanova University Archives contains administrative and historical records of the University. Holdings include manuscripts, documents, correspondence, letters, reports, minutes of meetings, accreditation reports, self studies, institutional studies, publicity materials, posters, programs of events, invitations, anniversary celebration records, addresses, citations, news clippings, directories, departmental/public relations brochures, handbooks, pamphlets, scrapbooks, photographs and memorabilia. Some materials that can be considered archival are housed in a special collection identified as OV (Villanova University Publications Collections). These materials include the following: college/university catalogs, directories, yearbooks, university and student publications, faculty publications, and theses.

Wagner Free Institute of Science

1700 West Montgomery Avenue

Philadelphia, PA 19121

Repository established: 1988

Access:

Contact person: Librarian

Telephone: 215-763-6529x12

Fax: 215-763-1299

E-mail: lynnd@wagnerfreeinstitute.org

Web: www.wagnerfreeinstitute.org

Days and hours of operation: Tuesday-Friday 9:00-4:00

Appointment necessary? Required

Holdings:

Total volume: 800 linear feet

Inclusive dates: 1780 – present

Scope and content of holdings/collections: The Institute's archives and manuscripts collection includes the personal and business records of the founder William Wagner dating from 1810 and the records of the Institute from its inception in 1855. These include records pertaining to the establishment and administration of the First Branch of the Free Library of Philadelphia called the Wagner Branch (1890 – 1962), and records and documentation of the Institute's participation in the national and local University Extension movement. Research papers and correspondence of many of the Institute's distinguished faculty and staff are also part of the archives, as well as drawings, teaching charts, and over 4,500 glass lantern slides used to illustrate lectures. The Institute has an extensive library of primarily scientific works collected by the founder, and over the course of its history. Dating from the late 17th to the early 20th century, the collection covers the natural and physical sciences, education, medicine, archaeology and anthropology, the pseudo-sciences, instrument building, and engineering. The extensive journal collection includes research done by most major European and Asian scientific societies and many publications from smaller (and for the most part defunct) scientific societies. The collection also includes series of geological surveys and United States Geological Survey maps.

West Chester University School of Music Archives

817 South High Street

Swope Music Building

West Chester, PA 19383

Repository established: 2005

Access:

Contact person: Archivist

Telephone: 610-436-2739

Web: www.wcupa.edu/cvpa

Days and hours of operation: By appointment

Appointment necessary? Required

Holdings:

Total volume: 75 cubic feet

Inclusive dates: 1896 – present

Predominant dates: 1920s – present

Scope and content of holdings/collections: The West Chester University School of Music Archives was established in 2005 to acquire, preserve, and make available archival materials that document the history of the School of Music. These materials include records of historic value generated or received by the School of Music in the course of its activities, as well as relevant materials from the personal collections of faculty and others who have played a significant role in the history of the School of Music. The Archives includes programs from concerts, recitals, and special events; recordings; scrapbooks and photographs; posters and promotional items, WCU and School of Music publications; newspaper clippings and published and printed matter; oral histories; and other materials. The Archives also holds internal records that document the history of the School of Music, such as administrative files, reports, studies, correspondence, meeting minutes, and related materials.

West Chester University Special Collections

Franis Harvey Green Library – Room 615

25 West Rosedale Avenue

West Chester, PA 19383

Repository established: 1873

Access:

Contact person: Jamie Peretich Kohler, Special Collections Librarian

Telephone: 610-436-3456

Fax: 610-738-0554

E-mail: libspeccol@wcupa.edu

Web: www.wcupa.edu/library.fhg/specialcollections/default.asp

Days and hours of operation: Monday-Friday 8:00-4:00, but hours may fluctuate due to schedule of Special Collections Librarian. Summer hours are more restricted.

Appointment necessary? Required

Holdings:

Scope and content of holdings/collections: The Special Collections Department consists of two distinct areas: Special Collections and West Chester University Archives. Special Collections consists of a variety of individual collections, including the Darlington Collection of 19th-century natural science materials; the five Shakespeare Folios; the book of Signers to the Declaration of Independence; the correspondence of General Anthony Wayne; the Ehinger Collection of late 19th- and early 20th-century health and physical education materials; the Weintraub Archives and Literary Research Collection; the Normal Collection of books by West Chester University faculty, students and alumni; the Chester County Collection of books about Chester County and/or by Chester County residents; the Philips Autographed Library of about 2,500 inscribed books (housed in the Philips Memorial Building); and other collections. The West Chester University Archives contains the records of the University, including Council of Trustees minutes, college catalogs, student newspapers, photographs, yearbooks, and other materials.

Westminster Theological Seminary

2960 West Church Rd.

Glenside, PA 19038

Repository established: circa 1940

Access:

Contact person: Archivist

Telephone: 215-572-3822

E-mail: gmullen@wts.edu

Days and hours of operation: Monday-Friday 9:00-5:00

Appointment necessary? Required

Holdings:

Total volume: 160 linear feet

Inclusive dates: 1886 – present

Predominant dates: 1920 – 1970

Scope and content of holdings/collections: Includes archives of the Seminary and of the Orthodox Presbyterian Church; and papers of J. Gresham Machen, Ned B. Stonehouse, Edward J. Young and Paul Woolley.

Westtown School

Westtown Road

PO Box 1799

Westtown, PA 19395

Repository established: 1938

Access:

Contact person: Archivist

Telephone: 610-399-7834

Fax: 610-399-3760

E-mail: archivist@westtown.edu

Web: www.westtown.edu

Days and hours of operation: Monday-Friday 8:30–4:00 (when school is in session)

Appointment necessary? Required

Holdings:

Total volume: 2,000 linear feet

Inclusive dates: 1650 – present

Predominant dates: 1799 – present

Scope and content of holdings/collections: Collection includes institutional records circa 1790 to present; student and faculty letters, diaries and journals (primarily 19th century); student exercise books, piece books, and other work, including art work; school publications; photographs; rare books, particularly Quaker related titles; needlework samplers; Quaker clothing; and artifacts.

Widener University

Archives, Wolfgram Memorial Library

One University Place

Chester, PA 19013

Repository established: 1980

Access:

Contact person: Archivist

Telephone: 610-499-4591

Fax: 610-499-4588

E-mail: archives@mail.widener.edu

Web: www.widener.edu - once there, Select "Libraries," "Wolfgram Memorial Library," then "Widener Archives"

Days and hours of operation: Monday-Friday 9:00-5:00

Appointment necessary? Required

Holdings:

Total volume: 1,500 linear feet

Inclusive dates: 1861 – present

Predominant dates: 1900 – present

Scope and content of holdings/collections: Holdings document the history of Widener University and its predecessor institutions, including Pennsylvania Military College. Holdings include yearbooks, course catalogs, photographs, president's papers, oral histories, faculty information, digital exhibits.

**William Way Community Center - Gay, Lesbian, Bisexual,
Transgender Library/Archives of Philadelphia**

1315 Spruce Street

Philadelphia, PA 19107

Repository established: 1975

Access:

Telephone: 215-732-2220

E-mail: firstrep@waygay.org

Web: www.waygay.org

Days and hours of operation: Call for current information

Appointment necessary? Recommended

Holdings:

Total volume: 11,000 volumes, 560 cubic feet

Inclusive dates: 1890s – present

Predominant dates: 1960s – present

Scope and content of holdings/collections: Collections consist of books, periodicals, organizational records, personal papers, ephemera, visual materials, and sound recordings concerning sexual minorities,

the gay/lesbian rights movement, and the history of sexual minority communities with emphasis on Philadelphia and the Delaware Valley. Secondary focus: the women's movement, 1950s – 1970s. Books include biography, communications, liberation, literature, medicine, sports, health, politics, history, social sciences (including education, philosophy, psychology, religion and spirituality and sociology), sexuality, and erotica. Many books and periodicals are out-of-print and rare. Duplicates circulate.

Wistar Archives

3601 Spruce Street

Philadelphia, PA 19104

Repository established: 1892

Access:

Contact person: Archivist

Telephone: 215-898-3826

Fax: 215-898-3856

E-mail: nlong@wistar.org

Web: www.wistar.org

Days and hours of operation: Monday-Friday 9:00-5:00

Appointment necessary? Required

Holdings:

Total volume: 60 linear feet

Inclusive dates: 1726 – 2002

Predominant dates: 1835 – 1895

Scope and content of holdings/collections: The archives of the Wistar Institute preserve the history of the Wistar Institute of Anatomy and Biology and of the Horner Museum which formed the basis for its founding. Archival collections encompass records and correspondence of Wistar family members; Civil War collections related to the 71st

Penna. Vol./California Regiment; and records related to the founding and continued scientific work of the Wistar Institute.

List of Repositories by Type

Art and Architecture

- Athenaeum of Philadelphia
- Delaware Art Museum, Helen Farr Sloan Library & Archives
- University of Pennsylvania - Architectural Archives

Business and Industry

- ACE Archives
- David Sarnoff Library
- Philadelphia Contributionship

Educational Institution

- Bryn Mawr College
- Cabrini College
- Cheyney University Archives
- Curtis Institute of Music
- Drexel University Archives and Special Collections
- Educational Institution
- Educational Institution
- Educational Testing Service
- Felician College Archives

- Friends Historical Library at Swarthmore College
- Girard College History Collection
- Gwynedd-Mercy College
- Haverford College
- Holy Family University Archives
- Institute for Advanced Study Archives
- Lafayette College
- LaSalle University - Archives
- LaSalle University - Special Collections
- Moravian College and Moravian Theological Seminary
- Neumann College
- Peirce College
- Princeton Theological Seminary, Special Collections
- Princeton University Archives, Seeley G. Mudd Manuscript Library
- Rosemont College
- Rutgers University Libraries, Special Collections and University Archives
- Saint Joseph's University Archives and Special Collections
- Swarthmore College Peace Collection
- Temple University – Special Collections

- Temple University - Urban Archives
- University of Delaware Library - Special Collections
- University of Delaware - University Archives and Records Management
- University of Pennsylvania - University Archives and Records Center
- University of Pennsylvania, Rare Book & Manuscript Library
- University of Pennsylvania Law School - Biddle Law Library Archives
- University of the Arts
- University of the Sciences in Philadelphia
- Ursinus College
- Villanova University
- West Chester University School of Music Archives
- West Chester University Special Collections
- Westminster Theological Seminary
- Westtown School
- Widener University

Ethnic Institution

- African American Museum in Philadelphia
- American Swedish Historical Museum

- German Society of Pennsylvania
- Philadelphia Jewish Archives Center
- Temple University - Charles L. Blockson Afro-American Collection
- University of Pennsylvania - Library at the Herbert D. Katz Center for Advanced Judaic Studies

Government

- Chester County Archives and Records Services
- Delaware County Archives
- Delaware Public Archives
- Fairmount Park Historic Resource Archive
- Independence National Historical Park Library &
- Monmouth County Archives
- National Archives and Records Administration - Mid Atlantic Region
- New Jersey State Archives
- Pennsylvania State Archives
- Philadelphia City Archives
- Philadelphia Water Department Archives

Historical Society

- Atlantic County Historical Society
- Bridesburg Historical Society
- Bucks County Historical Society, Spruance Library
- Burlington County Historical Society
- Camden County Historical Society
- Cape May County Historical and Genealogical Society
- Chadds Ford Historical Society - Roland Disney Library
- Charlestown Historical Society
- Chester County Historical Society
- Chestnut Hill Historical Society
- Concord Township Historical Society
- Cumberland County Historical Society
- Delaware County Historical Society
- Delaware Historical Society
- Germantown Historical Society
- Gloucester County Historical Society
- Historic Yellow Springs
- Historical Society of Bensalem Township
- Historical Society of Fort Washington
- Historical Society of Frankford

- Historical Society of Montgomery County
- Historical Society of Moorestown
- Historical Society of Pennsylvania
- Historical Society of Phoenixville Area
- Historical Society of Princeton
- Historical Society of Tacony
- Hunterdon County Historical Society
- Lansdale Historical Society
- Lower Merion Historical Society
- Montgomery Township Historical Society
- Moravian Historical Society
- Northampton County Historical & Genealogical Society
- Ocean County Historical Society
- Old York Road Historical Society
- Pottstown Historical Society
- Radnor Historical Society
- Salem County Historical Society

Horticultural

- Pennsylvania Horticultural Society
- University of Pennsylvania - Morris Arboretum Library

Library

- Bethlehem Area Public Library
- Corbit Calloway Memorial Library - Delmarva Collection
- David Library of the American Revolution
- Free Library of Philadelphia – Print and Picture Collection
- Haddonfield Public Library
- Library Company of Philadelphia
- Margaret R. Grundy Memorial Museum
- New Jersey State Library
- Newark Public Library, Special Collections Division
- Rosenbach Museum and Library
- Trenton Public Library

Medical and Health Care

- American College of Physicians Archives
- College of Physicians of Philadelphia
- Cooper University Hospital Archives
- Drexel University College of Medicine Archives & Special Collections
- Pennsylvania Hospital Archives
- Thomas Jefferson University

- University of Pennsylvania School of Nursing - Barbara Bates Center for the Study of the History of Nursing

Military

- Grand Army of the Republic Civil War Museum and Library

Museum

- Atwater Kent Museum of Philadelphia
- Barnes Foundation Archives
- Brandywine River Museum
- Griffith Morgan House
- Henry Francis du Pont Winterthur Museum
- Independence Seaport Museum
- James A. Michener Art Museum
- Old Barracks Museum
- Pennsylvania Academy of the Fine Arts
- Philadelphia Museum of Art
- Please Touch Museum
- University of Pennsylvania Museum Archives

Other

- Soroptimist International of the Americas

Private club

- Union League of Philadelphia

Religious Organization

- Academy of the New Church Archive
- Historic St. George's United Methodist Church
- LaSalle University - Brothers of the Christian Schools, Baltimore Province
- Mennonite History Library & Archives
- Moravian Archives
- Philadelphia Archdiocesan Historical Research Center
- Presbyterian Historical Society
- Sisters of St. Francis of Philadelphia Archives
- Sisters of the Blessed Sacrament
- Society of the Holy Child Jesus - American Province Archives
- St. Vincent's Seminary - Ducournau Archives of the Eastern Province of the Congregation of the Mission

Science and Technology

- Academy of Natural Sciences
- American Philosophical Society
- Chemical Heritage Foundation
- Wagner Free Institute of Science

Social Service Organization

- American Friends Service Committee
- William Way Community Center - Gay, Lesbian, Bisexual, Transgender Library/Archives of Philadelphia

List of Repositories by Location

DELAWARE

Dover

- Delaware Public Archives

Newark

- University of Delaware - Library Special Collections
- University of Delaware - University Archives and Records Management

Odessa

- Corbit Calloway Memorial Library - Delmarva Collection

Wilmington

- Delaware Art Museum, Helen Farr Sloan Library & Archives
- Delaware Historical Society
- Hagley Museum and Library

Winterthur

- Henry Francis du Pont Winterthur Museum

NEW JERSEY

Burlington City

- Burlington County Historical Society

Camden

- Cooper University Hospital Archives

Cape May Court House

- Cape May County Historical and Genealogical Society

Collingswood

- Camden County Historical Society

Delair

- Griffith Morgan House

Flemington

- Hunterdon County Historical Society

Greenwich

- Cumberland County Historical Society

Haddonfield

- Haddonfield Public Library

Lodi

- Felician College Archives

Manalapan

- Monmouth County Archives

Moorestown

- Historical Society of Moorestown

New Brunswick

- Rutgers University Libraries, Special Collections and University Archives

Newark

- Newark Public Library, Special Collections Division

Princeton

- David Sarnoff Library
- Educational Testing Service
- Historical Society of Princeton
- Institute for Advanced Study Archives
- Princeton Theological Seminary, Special Collections
- Princeton University Archives, Seeley G. Mudd Manuscript Library

Salem

- Salem County Historical Society

Somers Point

- Atlantic County Historical Society

Toms River

- Ocean County Historical Society

Trenton

- New Jersey State Archives

- New Jersey State Library
- Old Barracks Museum
- Trenton Public Library

Woodbury

- Gloucester County Historical Society

PENNSYLVANIA

Aston

- Neumann College
- Sisters of St. Francis of Philadelphia Archives

Bala Cynwyd

- Lower Merion Historical Society

Bensalem

- Historical Society of Bensalem Township
- Sisters of the Blessed Sacrament

Bethlehem

- Bethlehem Area Public Library
- Moravian Archives
- Moravian College and Moravian Theological Seminary

Bristol

- Margaret R. Grundy Memorial Museum

Bryn Athyn

- Academy of the New Church Archive

Bryn Mawr

- Bryn Mawr College

Chadds Ford

- Brandywine River Museum
- Chadds Ford Historical Society - Roland Disney Library

Chester

- Delaware County Historical Society
- Widener University

Chester Springs

- Historic Yellow Springs

Cheyney

- Cheyney University Archives

Collegeville

- Ursinus College

Concordville

- Concord Township Historical Society

Devault

- Charlestown Historical Society

Doylestown

- Bucks County Historical Society, Spruance Library
- James A. Michener Art Museum

Easton

- Lafayette College
- Northampton County Historical & Genealogical Society

Fort Washington

- Historical Society of Fort Washington

Glenside

- Westminster Theological Seminary

Gwynedd Valley

- Gwynedd-Mercy College

Harleysville

- Mennonite History Library & Archives

Harrisburg

- Pennsylvania State Archives

Haverford

- Haverford College

Jenkintown

- Old York Road Historical Society

Lansdale

- Lansdale Historical Society

Lima

- Delaware County Archives

Merion

- Barnes Foundation Archives

Montgomeryville

- Montgomery Township Historical Society

Nazareth

- Moravian Historical Society

Norristown

- Historical Society of Montgomery County

Philadelphia

- Academy of Natural Sciences
- ACE Archives
- African American Museum in Philadelphia
- American College of Physicians Archives
- American Friends Service Committee
- American Philosophical Society
- American Swedish Historical Museum

- Athenaeum of Philadelphia
- Atwater Kent Museum of Philadelphia
- Bridesburg Historical Society
- Chemical Heritage Foundation
- Chestnut Hill Historical Society
- College of Physicians of Philadelphia
- Curtis Institute of Music
- Drexel University Archives and Special Collections
- Drexel University College of Medicine Archives & Special Collections
- Fairmount Park Historic Resource Archive
- Free Library of Philadelphia – Print and Picture Collection
- German Society of Pennsylvania
- Germantown Historical Society
- Girard College History Collection
- Grand Army of the Republic Civil War Museum and Library
- Historic St. George's United Methodist Church
- Historical Society of Frankford
- Historical Society of Pennsylvania
- Historical Society of Tacony

- Holy Family University Archives
- Independence National Historical Park Library &
- Independence Seaport Museum
- LaSalle University - Archives
- LaSalle University - Brothers of the Christian Schools, Baltimore Province
- LaSalle University - Special Collections
- Library Company of Philadelphia
- National Archives and Records Administration - Mid Atlantic Region
- Peirce College
- Pennsylvania Academy of the Fine Arts
- Pennsylvania Horticultural Society
- Pennsylvania Hospital Archives
- Philadelphia City Archives
- Philadelphia Contributionship
- Philadelphia Jewish Archives Center
- Philadelphia Museum of Art
- Philadelphia Water Department Archives
- Please Touch Museum
- Presbyterian Historical Society

- Rosenbach Museum and Library
- Saint Joseph's University Archives and Special Collections
- Soroptimist International of the Americas
- St. Vincent's Seminary - Ducournau Archives of the Eastern Province of the Congregation of the Mission
- Temple University - Charles L. Blockson Afro-American Collection
- Temple University – Special Collections
- Temple University - Urban Archives
- Thomas Jefferson University
- Union League of Philadelphia
- University of Pennsylvania Architectural Archives
- University of Pennsylvania Law School Biddle Law Library Archives
- University of Pennsylvania Library at the Herbert D. Katz Center for Advanced Judaic Studies
- University of Pennsylvania Morris Arboretum Library
- University of Pennsylvania Museum Archives
- University of Pennsylvania Rare Book & Manuscript Library
- University of Pennsylvania School of Nursing Barbara Bates Center for the Study of the History of Nursing
- University of Pennsylvania University Archives and Records Center

Directory of Archival and Manuscript Repositories in the Delaware Valley

- University of the Arts
- University of the Sciences in Philadelphia
- Wagner Free Institute of Science
- William Way Community Center - Gay, Lesbian, Bisexual, Transgender Library/Archives of Philadelphia
- Wistar Archives

Phoenixville

- Historical Society of Phoenixville Area

Pottstown

- Pottstown Historical Society

Radnor

- Cabrini College

Rosemont

- Rosemont College
- Society of the Holy Child Jesus - American Province Archives

Swarthmore

- Friends Historical Library at Swarthmore College
- Swarthmore College Peace Collection

Villanova

- Villanova University

Washington Crossing

- David Library of the American Revolution

Wayne

- Radnor Historical Society

West Chester

- Chester County Archives and Records Services
- Chester County Historical Society
- West Chester University School of Music Archives

Westtown

- Westtown School

Wynnewood

- Philadelphia Archdiocesan Historical Research Center